



DESTINATION
→ NANCY
OFFICE DE TOURISME

GROUPS CITY GUIDE 2023

DESTINATION NANCY - Surprises to discover

**métropole
GrandNancy**



Organisation
des Nations Unies
pour l'éducation,
la science et la culture



Place Stanislas, de la Carrière
et d'Alliance à Nancy
inscrites sur la liste du patrimoine
mondial en 1983

Contents

p. 3/5

GETTING TO NANCY

p. 6/7

WELCOMING NANCY

p. 8/9

WELLNESS NANCY

p. 10

VIBRANT NANCY

p. 11

INNOVATIVE NANCY

p. 12/17

NOT-TO-BE-MISSED NANCY

p. 12/13

Tours and short breaks
2023

p. 14/15

Guided tours prices

p. 16

Alternative Nancy

p. 18/19

NANCY FOR YOUNG VISITORS

p. 20/21

**EPICUREAN NANCY:
GOURMET TOURISM**

p. 22/23

**CULTURAL NANCY: MUSEUMS
IN GREATER NANCY**

p. 24/25

GREATER NANCY AREA

p. 26

OUR HOLIDAY IDEAS

p. 27

FESTIVITIES IN NANCY

p. 28/29

LORRAINE

p. 30/31

MEURTHE-ET-MOSELLE



INCOMING GROUPS SERVICE

DESTINATION NANCY provides you with its expertise and in depth knowledge of the area. Simply send us a request and our incoming groups service will quickly put together program ideas with your choice of accommodation, visits and transfers.

Contact:

Tel.: +33 (0)3 83 35 90 02

reservations@destination-nancy.com

www.nancy-tourisme.fr > Groups section

OUR SERVICES

- A single contact person for personalised service
- An answer to your request within 72 hours
- Adapted programs guaranteed by the Tourism & Handicap* label
- Guided tours in several foreign languages

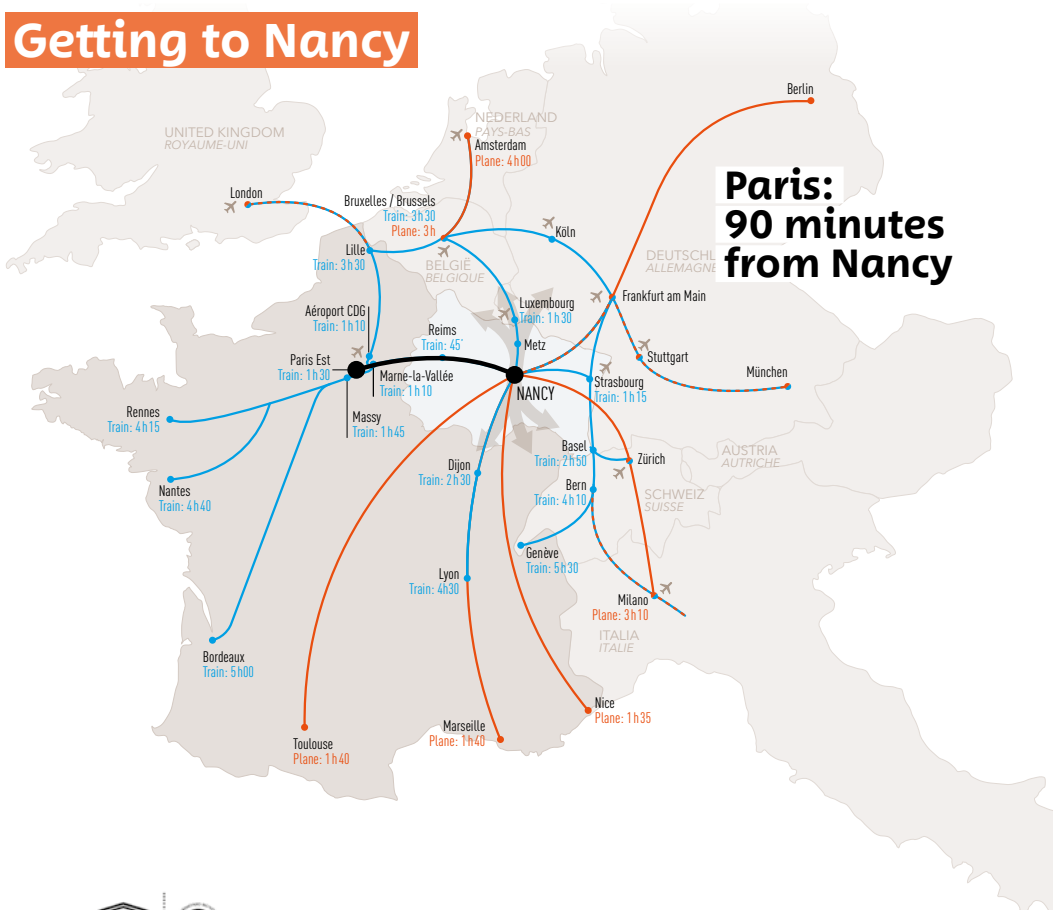
Legend for guided tours

-  Duration
-  Date
-  On foot
-  By bus
-  Audiophones available for tours
-  Physical disability
-  Visual disability
-  Auditory disability



* DESTINATION NANCY has been awarded the Tourism & Handicap label guaranteeing tours adapted for visitors with physical, visual and auditory disabilities.

Getting to Nancy



Organisation des Nations Unies pour l'éducation, la science et la culture
Places Stanislas, de la Carrière et d'Alliance à Nancy inscrites sur la Liste du patrimoine mondial en 1993.

1

of the most beautiful places in the world



52,000
students



23,000
businesses



N°1 in Lorraine
for shopping

(covered market and shopping centre 3 minutes' walk from the train station)



More than
2,200
hotel rooms



1500
of them are less than 10 minutes by foot from the city center



4
competitiveness hubs



4
"Remarkable Gardens"
(tourism label)



The **WHOLE**
city centre easily accessible on foot

Getting to Nancy



BY TRAIN

- Paris-Nancy: 1.5 hr
- Strasbourg-Nancy: 1 hr 15 min
- Luxemburg-Nancy: 1.5 hr

Nancy Train Station

3 place Simone Veil
Tel.: +33 (0)8 36 35 35 35

Lorraine TGV SNCF Station

(38 km from Nancy)
Route Départementale 910
57420 LOUVIGNY

www.sncf-connect.com

Connections to major French cities from the Lorraine TGV station

Lille (2 hr 5 min), Nantes (3 hr 55 min), Rennes (3 hr 55 min), Bordeaux (4 hr 15 min), Marne-la-Vallée TGV (1 hr 10 min), Massy TGV (1 hr 45 min)
Shuttles from the Lorraine TGV station to the centre of Nancy

BY COACH

From Paris or Strasbourg via the A4 motorway
From Brussels, Luxembourg, Metz or Dijon via the A31 motorway

BY PLANE

Metz Nancy Lorraine Airport

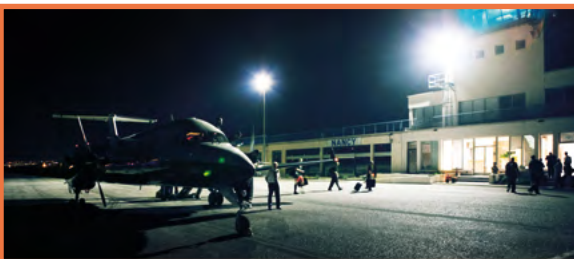
(45 km north of Nancy)
57420 GOIN
Tel.: +33 (0)3 87 56 70 00

www.lorraineairport.com

Shuttles run between the airport and Nancy city centre (timetables can be found on the airport's website)

Grand Nancy Aéroport

Nancy-Tomblaine Airport
54510 TOMBLAINE
Tel.: +33(0)3 83 21 56 90



GETTING AROUND TOWN

Trams and buses:

Public transportation is free every weekend. There are park and ride facilities on the outskirts of the city.

Try to buy your transport passes before arrival; the group pass is for 10 people or more.

Orders must be made at least 48 hours prior to arrival.

Bookings: Allostan +33 (0)3 83 30 08 08
www.reseau-stan.com



- Map with itineraries and parking for coaches and tour buses available for download at www.nancy-tourisme.fr > Groups section (French)
- One free coach parking area: rue de l'île-de-Corse.
- Drop-off point on Rue Sainte-Catherine at the corner of Rue Bailly, just a few metres from Place Stanislas right before the pedestrian zone.
- Public toilets nearby.



NANCY CITY GUIDE AND CITY MAPS

- City maps available free of charge at the reception of the Tourist Office during opening hours
- NANCY CITY GUIDE available for download from our website
<https://www.nancy-tourisme.fr/en/prepare-your-stay/services-of-the-tourist-office/documentation/>



Welcoming Nancy

Nancy welcomes you with open arms. From the Ville Vieille to Place Stanislas, with its museums, performance venues, bars and restaurants, the capital of the dukes of Lorraine is passionate about cultivating its art de vivre lifestyle.



Save time and money
with the Nancy City
Pass!

THE 3 GOLDEN AGES OF NANCY



Organisation
des Nations Unies
pour l'éducation,
la science et la culture



Places Stanislas, de la Carrière
et d'Alliance à Nancy
inscrites sur la liste du patrimoine
mondial en 1983



RENAISSANCE

During the Renaissance, the Duchy of Lorraine and its capital city of Nancy enjoyed an exceptional period in terms of politics, economics, art and academics. In the Ville Vieille, the dukes updated their palace (the gatehouse of the Ducal Palace is one of the first examples of Renaissance architecture in Lorraine) and several monuments were built: Cordeliers Chapel, Place de la Carrière, the private homes of high-ranking officers of the duchy, defensive constructions, the Porte de la Citadelle gate and more, all incorporating the latest defensive innovations of the Renaissance. The most substantial addition was the one that got all of Europe talking about Nancy: the construction of the New Town beginning in 1588.



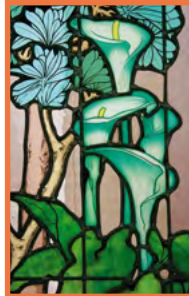
18TH CENTURY

Built by the architect Emmanuel Héré, Place Stanislas is a privileged place for Nancy locals and is known as one of the most beautiful royal squares in the world.

It was elected in 2021 "favorite monument in France". It was commissioned by Stanislaw, the last duke of Lorraine, to the architect Emmanuel Héré, a student of Boffrand. Its light paving stones, gilded gates and rococo fountains highlight the pure and classical architecture of the buildings. Along with Place d'Alliance, Place de la Carrière and the Arc Héré triumphal arch, Place Stanislas is a part of an ensemble included on the UNESCO World Heritage List.

40 YEARS UNESCO

In 2023, the City of Nancy celebrates the 40th anniversary of being declared a UNESCO World Heritage Site with its 18th-century architectural ensemble, comprising Place Stanislas, Place de la Carrière and Place d'Alliance.



THE 1900S AND ART NOUVEAU

An alliance of the art world based on the ideal, "art in everything, art for everyone", French Art Nouveau was born in Nancy around 1880 from the minds of genius, rigorous, rounded and generous artists including Gallé, Prouvé (Victor), Majorelle and Daum. The Nancy School, "École de Nancy" will lead you to the Excelsior brasserie, Nancy-Thermal spa or the Saurupt district: a genuine catalogue of Art Nouveau and Art Deco architecture between 1902 and 1935.

A GOURMET AND EPICUREAN TOWN

NANCY BOASTS MORE THAN 20 SWEET SPECIALITIES

Macarons, bergamote, mirabelle plums, madeleines, Saint-Epvre, visitandine, gingerbread, babas, candies, red sugar, jams, chocolates and more. The NANCY PASSIONS SUCREES brand guarantees exceptional, artisanal products made right here on the territory respecting traditional methods and using excellent, quality products from verified sources. A visit to Nancy isn't complete without tasting one or several of our sweet specialities!



**THE LORRAINE
BEER ROUTE**

105 breweries and microbreweries, 19 historical sites and 3 museums including the French Brewing Museum in Saint-Nicolas-de-Port (15 km from Nancy) come together to make Nancy and its surrounding area a paradise for beer enthusiasts.

Not-to-be-missed events: The Brewers Trade Fair and Beer Festival take place every year at the Parc Expo of Nancy.

**Dates 2023 : 21st and 22nd october le Salon du Brasseur
22nd and 23rd october la Fête des Bières**

More info at www.routelorrainedelabiere.com and www.salondubrasseur.com

ARTS AND CRAFTS

Nancy is well known for its tradition of arts and crafts: glassworks, enamels, Earthenware, ironworks... **DESTINATION NANCY - Office de Tourisme** aims to become a referent tourist office in France to promote this tradition. A dedicated space has been laid out. We also offer you the possibility to meet craftsmen and see them creating.



ARTY SHOP

The Tourist Office aims to be a showcase for the region's artists and craftsmen.

The Arty Shop is a dedicated space that gives visibility to creators who are not always recognised and offers visitors creations that are accessible to all budgets.

Thanks to this space, the Tourist Office presents the first shop to be labelled "métiers d'arts" by the Mission Grand Est Métiers d'Art.

Wellness Nancy

↔ Nancy Thermal ↔

Spring 2023 will see Nancy become a wellness destination, with the opening of Nancy Thermal, France's first and only aquatic and thermal complex located in a city centre.



Adjacent to the Sainte-Marie park and a stone's throw from the École de Nancy museum, this aquatic leisure, health and wellness complex will offer a host of activities across 3 spaces supplied with thermal water and open to all:

THE AQUATIC AND SPORTS COMPLEX

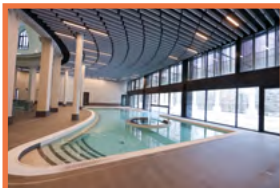
Features indoor and outdoor spaces, including a 400 m² water play area and pools covering a total of 2,100 m², 1,900 m² of which is open year-round.



You'll find different types of sports-based spaces, from a 50 m Olympic pool to a gym.

THE WELLNESS AREA

This fully encircles the round pool and includes hydromassage jets, a relaxation room, a herbal tea room and plenty of other spaces to promote well-being.



THE THERMAL CENTRE

This is dedicated entirely to thermal treatments and includes a "ThermaSport" area for athletes and a "ThermaSanté" space, which offers treatments for rheumatism and other conditions, based on the beneficial properties of thermal water.

Nancy Thermal also boasts a hotel, restaurant, bar, shop and child-care centre.

WELL-BEING ACTIVITIES/TOURS



NATURE WALK

Explore the Rives de Meurthe neighbourhood with a guide specialising in natural heritage. Along this guided walk, you will be introduced to the flowers and plants that grow along the banks of the Meurthe, their origins and their various uses (in cooking, medicine, etc.) and benefits.

YOGA CLASSES

Join a yoga class guided by teacher Lysiane (Mademoiselle Pole school, aerial arts and yoga) and enjoy all the benefits of this practice.

Sessions take place in one of the area's many parks, where you'll be able to breathe in all that wonderful fresh air in a beautiful, natural setting, while learning a little more about the natural heritage around you.

Open to beginners, from age 12.



OUTDOOR TRAINING

Would you like to combine a workout with a tour of the city? Our outdoor activity leader and qualified professional sports coach is here to help!

Step by step, explore the flora and fauna of the city of Nancy, combining your tour with

a 2- to 3-km run and muscle-strengthening exercises along the banks of the Meurthe.

It's a unique and unexpected experience and a truly different approach to fitness.

Open to beginners from age 14.



Vibrant Nancy

↻ 2023 highlights ↻

In 2023, the City of Nancy celebrates the 40th anniversary of being declared a UNESCO World Heritage Site with its 18th-century architectural ensemble, comprising Place Stanislas, Place de la Carrière and Place d'Alliance.

Visit our website for details and up-to-date information: [Nancy-tourisme.fr](https://www.nancy-tourisme.fr) (in 4 languages).



SPRING

↻ 27th March - 2nd April

**EUROPEAN ARTISTIC
CRAFT DAYS**

↻ 10th - 11th June

ART NOUVEAU WEEK-END

Special programme of events at the Ecole de Nancy Museum and the Villa Majorelle.

SUMMER

↻ 16th June -
10th September

"LA BELLE SAISON"

Enter a grandiose dream of light: a video mapping show on Place Stanislas.

↻ 21st June

NATIONAL MUSIC DAY

↻ July - August

NANCYPHONIES FESTIVAL

The leading classical music festival in the Grand Est region.

↻ Late August -
early September

**NANCY LORRAINE
INTERNATIONAL
FILM FESTIVAL**

Discover a different type of cinema, open to new horizons and diversity.

AUTUMN

↻ 8th - 10th September

LE LIVRE SUR LA PLACE

The first major book fair of the French literary season.

↻ 16th - 17th September

EUROPEAN HERITAGE DAYS

↻ October

JARDIN ÉPHÉMÈRE

When nature dialogues with the remarkable heritage of Place Stanislas.

↻ 7th - 21st October

NANCY JAZZ PULSATIONS

The most iconic music festival in the Grand Est region.

↻ 20th - 22nd October

**BREWER'S TRADE FAIR
AND BEER FESTIVAL**

Parc Expo Nancy

↻ November

TRUFFLE FESTIVAL

The truffle festival attracts both enthusiasts and a host of researchers and specialists in the precious tuber. Centred around scientific gatherings, this "gastronomic and popular" festival becomes more prestigious every year.

WINTER

↻ Late November 2023 -
early January 2024

**SAINT NICHOLAS FESTIVITIES
IN NANCY**

Parade through the town on 2 December, cultural and promotional events, music, illuminations, rides and the big wheel, the Saint Nicholas villages (Christmas markets) and more. Enjoy 40 days of festivities in Nancy, centred around the main weekend of **2nd and 3rd December**.

Innovative Nancy



FUN, CAPTIVATING, AND ESSENTIAL: OUR 360° VIRTUAL TOURS



Since January 2021, you can get to know our destination with free 360° virtual tours provided by DESTINATION NANCY, the Tourist Office of Greater Nancy.

Simply follow the link to start your visit on a computer, tablet, smartphone, or virtual reality headset. The tour begins on Place Stanislas, where you can choose from 50 virtual views of tourism sights, historical and natural sites of Greater Nancy.

Use these virtual tours to share the Nancy experience with your partners and customers. These visits can also help you perfect your tour or your holiday program in the capital of the Dukes of Lorraine.

There are also hot spots to discover at each site (nearby points of interest such as shops, services, and partners).

www.visitnancy360.com



Not-to-be-missed Nancy

↔ Tours and short breaks 2023 ↔



1.5 hr 

1 • HISTORIC CITY CENTRE

This tour notably includes Place Stanislas and Place de la Carrière and allows the visitor to examine the lasting impression the last Duke of Lorraine made on the city. The charm of the Ville Vieille, with its medieval and Renaissance elements, is revealed thanks not only to its architectural gems, but also to its great shops, pretty terraces and little cafés. The Ducal Palace, the distinctive private mansions, the Porte de la Craffe Gate and Saint-Epvre Church are some important monuments from Lorraine's history included on the tour.

Optional 30 min extra - Visit the inside of the Porte de la Craffe Gate - 18 people per group maximum.



1.5 hr 

2 • UNESCO WORLD HERITAGE

In 2023, the City of Nancy celebrates the 40th anniversary of being declared a UNESCO World Heritage Site with its 18th-century architectural ensemble, comprising Place Stanislas, Place de la Carrière and Place d'Alliance.



Organisation
des Nations Unies
pour l'éducation,
la science et la culture



Place Stanislas, de la Carrière
et d'Alliance à Nancy
inscrits sur la liste du patrimoine
mondial en 1983



1.5 hr 

3 • ART NOUVEAU AT THE HEART OF BUSINESS

From the Tourist Office to the Excelsior brasserie, this tour explores the sites of Nancy's business world around the year 1900: shops, pharmacies, banks (in particular the glass ceiling of Crédit Lyonnais) and other buildings that reflect the artistic spirit of the town.

Optional 30 min extra - Visit the inside of the Chamber of Commerce (stained-glass windows by Gruber), not available on weekends.



1.5 hr 

4 • ART NOUVEAU, ART DECO IN THE PARK OF SAURUPT

While Nancy is world renowned for its status as France's Art nouveau capital, it is lesser known for its Art déco heritage, which includes several thousand buildings. This tour takes you to the ideal site to better understand the differences between these two styles: Nancy's Saurupt Park that was urbanised mainly during interwar period



🕒 1.5 hr 🚗 ♿ 🚫

**5 • ART NOUVEAU HOMES BY BUS
ON THE EDGE OF TOWN**

From your coach, you will discover the most remarkable buildings of the Nancy School: Bergeret House, Saurupt Park (garden city composed of five more Art Nouveau villas) and Villa Majorelle.

Optional 30 min extra - Visit of the interior of Bergeret House, not available on weekends



🕒 1.5 hr 🚗 ♿ 🚫

6 • PRÉVILLE CEMETERY

Many of the tombs are designed in the Neo-Romanesque, Neo-Gothic, Neo-Moorish or Romano-Byzantine styles popular in the 19th century. Nancy was one of the birthplaces of the Art Nouveau style which features heavily at Préville Cemetery. As you wander among the rows of graves, you will be struck by the many epitaphs, the range of shapes and materials, and the light reflecting off the stone and stained glass.



🕒 1.5 hr 🚗 ♿ 🚫

7 • ART NOUVEAU HOMES FROM EXCELSIOR TO VILLA MAJORELLE

From the city centre to the neighbourhoods to the west of the town, the walk leads to Villa Majorelle and/or the Ecole de Nancy Museum. You'll discover how the city slowly expanded, taking over agricultural lands and former surrounding towns.



🕒 1.5 hr 🚗 ♿ 🚫

8 • STREET ART

Street art created by international and local artists (including Lorraine natives) stretches from Ville Vieille to Place des Vosges and from Place Simone Veil to Porte Sainte-Catherine. These contemporary works create paths through space and time. This urban heritage, to which stunning works are continually added, opens up new perspectives and narratives.

Other thematic visits are available: Nancy's botanical traditions, animals in the city, Nancy's street names, the Grand Salons of Nancy's city hall, Art Nouveau pharmacies, 18th-century churches, exclusive tour of the covered market, memorial trail: the 1943 Nancy raid and more.

↔ Guided tours prices ↔

Prices are valid from 01/01/2023 to 31/12/2023.

IN FRENCH

DURATION	WEEKDAYS & SATURDAYS	SUNDAYS	BANK HOLIDAYS & AFTER 9 P.M.
1 hr 30 min	€119	€139	€199
2 hr	€129	€169	€229
3 hr	€189	€279	€369
4 hr	€239	€299	€419
Additional hours	€49	€69	€89
Daily rate	€400	€600	€800

IN OTHER LANGUAGES

DURATION	WEEKDAYS & SATURDAYS	SUNDAYS	BANK HOLIDAYS & AFTER 9 P.M.
1 hr 30 min	€129	€169	€229
2 hr	€139	€209	€279
3 hr	€229	€339	€449
4 hr	€299	€439	€589
Additional hours	€69	€99	€129
Daily rate	€500	€700	€900

AUDIOPHONES

Audiophones are available for hire with one headset per person. A convenient and comfortable way to listen to the guide's comments.

- Up to 2 hours €49
- Over two hours: free or 10% off the price of the guided tour.

PRICES AND TOUR INFORMATION 2023

We offer tours in French, English, German, Japanese, Italian, Polish, Chinese and Russian. The prices correspond to the cost of providing a guide (they do not include the admission fees to museums and sites which charge for entry) for:

- The guided tours
- the museum tours

These prices do not apply to certain museums which have their own guides: Schott House, Fléville Château, Montaigu Château, La Douëra, Museum-Aquarium, Iron History Museum and the Botanical Gardens Jean-Marie Pelt (more information on request)

Walking tours and museum tours:

1 guide for 25 people. For groups with more participants, book a second guide or hire audiophones. Audiophones are mandatory for groups of 25 to 34 people maximum.

Bank holidays 2023:

Sunday 1st January, Monday 10th April, Monday 1st May, Monday 8th May, Thursday 18th May, Monday 29th May, Friday 15th July, Tuesday 15th August, Wednesday 1st November, Saturday 11th November, Monday 25th December.



OUR SHOP

Alongside tourist information, maps, and brochures, you'll find the perfect souvenir or gift:

- For yourself, as you discover the region and look for that little souvenir that won't weigh down your suitcase
- For your friends or family, to bring back "a little something" from your holiday in Nancy
- To mark the occasion and treat yourself to the object of your dreams

The Shop offers a wide and varied selection for all budgets, with top-notch assistance. Here, you'll find traditional local products, gourmet products with the Nancy Passions Sucrées label, books, a selection of regional textiles, as well as one-of-a-kind, unique items (including jewellery) made by our local artisans.

Open every day of the year, except 25 December, 1 January, and Sundays in January, February and March.

Not-to-be-missed Nancy

Alternative Nancy

RALLIES

🕒 2,5 hr 🚶 🦽 From €13 pp

Based on 20 people minimum (for fewer participants, a flat rate of €260 applies) *

Your choice of 3 themes:

- Historic city centre
- Art nouveau
- Gourmet (See page 21 Epicurean Nancy)

Experience this walking tour competition as a family, with friends or with colleagues. The rally is designed to help you discover the history of the ducal city and its anecdotes. Each itinerary is dotted with explanations and questions about the town, its history and its famous residents. The goal of each team is to answer the questions and get the most points! Prizes are awarded to the winners.

**Sundays and foreign languages (English and German) for an additional fee.*



TOURIST TRAIN

🕒 45 min.

Discovery tour of the historic centre on a tourist train: explore the 18th-century architectural ensemble and the old town.

- 1 departure every hour, on the hour, except at 1 p.m.
- April: 11 a.m. - 5 p.m., from May to September 10 a.m. - 6 p.m., October: 11 a.m. - 5 p.m.
- Recorded commentary in 10 foreign languages
- www.petit-train-nancy.fr
- Tel.: +33 (0)3 89 73 74 24
- Email: info@petit-train.com

So you know: the tourist train went electric in 2022





Nancy for young visitors

GUIDED TOURS



🕒 1 hr to 90 min 🧑🧒 ♿

€119 per group (max. 25 pupils)

DISCOVERING THE HISTORIC CITY CENTRE

Ages 8 to 17

Available Monday to Saturday
(except public holidays)

The tour includes Place Stanislas and Place de la Carrière. It addresses the rich personality of the last Duke of Lorraine through his different accomplishments. The tour of the Ville Vieille, with its medieval and Renaissance elements, passes by some of Lorraine's major historical sites, with particular attention to the countless details carved into stone or wood: figures, animals, decorative patterns, etc.



🕒 1 hr to 90 min 🧑🧒 ♿

€119 per group (max. 25 pupils)

DISCOVERING ART NOUVEAU

Ages 8 to 17

Available Monday to Saturday
(except public holidays)

From Place Maginot to Place Stanislas, this tour explores the sites that made up the business world around the year 1900: shops, banks and other buildings. We'll observe details illustrating the entrepreneurial spirit of the bourgeoisie of business from the time period by examining buildings from different angles: technology, structure, decorations, symbols, etc.



🕒 1 hr to 90 min 🧑🧒 ♿

€119 per group (max. 20 pupils)

ANIMALS IN THE CITY

Ages 3 to 8

Available Monday to Saturday
(except public holidays)

Dog or cat? Pigeon or sparrow? The visit takes a careful and documented look at the fabulous stone bestiary that decorates our façades.



🕒 1 hr to 90 min 🧑🧒 ♿

€119 per group (max. 20 pupils)

AROUND PLACE STANISLAS

Ages 3 to 8

Available Monday to Saturday
(except public holidays)

Just who was Stanislaw, the former king of Poland and the last Duke of Lorraine? What were his reasons for building this beautiful royal square in Nancy? We'll point out and explain the numerous symbols that make up its decor.

RALLIES

French, German or English-speaking guides (depending on the rally) assist with a few key moments: introduction and presentation, additional explanations at some points along the itinerary, correcting the sheets and awarding prizes. They do not, however, ensure the supervision of the group. Commentary is adapted to the age of the students.



HISTORIC CITY CENTRE RALLY

Ages 8 to 16

The itinerary is tailored to the age of the participants. From Monday to Saturday (except public holidays).

Explore Place Stanislas and the Ville Vieille in the company of your guide on a walking tour competition packed with questions and explanations.



ART NOUVEAU RALLY

Ages 8 to 16

The itinerary is tailored to the age of the participants. From Monday to Saturday (except public holidays).

A city-centre walking tour competition led by a guide to introduce your group to Art Nouveau architecture.



FRANCO-GERMAN OR FRANCO-ENGLISH RALLY

Ages 12 to 16

The itinerary is tailored to the age of the participants. From Monday to Saturday (except public holidays)

Pupils will follow this walking tour competition around historic Nancy in bilingual groups, offering them a fantastic opportunity to communicate with their foreign-language peers as they explore. The rally is led by two guides.

Epicurean Nancy: Gourmet tourism

GUIDED TOURS



🕒 1.5 hr 🍷 🍴 🚶

From €26 pp
(15 to 25 people)*

GASTRONOMIC VISIT

Combine a heritage discovery with a gourmet tasting. Tour one of Nancy's neighbourhoods (Ville Vieille, UNESCO heritage or an Art Nouveau district) and then enjoy a tasting of a regional speciality with one of our partners.



🕒 1.5 hr 🍷 🍴 🚶

From €13 pp
(15 to 25 people)*

ART NOUVEAU DELIGHTS

An afternoon snack at the Excelsior brasserie (Nancy's Art Nouveau brasserie) including a hot drink, juice and a snack of your choice. The tour can be in the company of a guide who will talk about Art Nouveau and explain the exceptional decor of the site.



🕒 1.5 hr 🍷 🍴 🚶

€6 pp in week and €12 pp
the Saturday
+ 1 dozen macarons
(20 to 60 people) *

BATT CHOCOLATS

Demonstrations and tastings. Discover how Lorraine's star products and Batt's own specialities are made, step by step. Favourites include Nancy Macarons, Bergamotes de Nancy (PGI), marzipan-covered mirabelle plums, Lorraine Chardons and Marquises.

Various chocolate figures are also produced at key times of year (Christmas, Easter, Valentine's Day, etc.).

www.alainbatt.com

Tel.: +33 (0) 83 35 70 00



🕒 2.5 to 3 hr 🧑🏻🧑🏿🧑🏽🧑🏾🧑🏪

From €19 pp (15 to 25 people) *

GOURMET RALLY

Visit Place Stanislas while tasting a bergamot candy. Admire an Art Nouveau façade while savouring a macaroon. On this walking tour competition, you'll discover some of Nancy's divine and exquisite specialities.



🕒 1.5 hr 🧑🏻🧑🏿🧑🏽🧑🏾🧑🏪

From €49 pp (not including transportation)

GOURMET LORRAINE

Cook your own quiche lorraine!

Morning

"Historic city centre" tour (see p. 12) then set off for the Auberge de la Mirabelle "Chez Léon" in Ferrières (44 km from Nancy) for a quiche Lorraine cooking class.

Lunch with a tasting of quiche lorraine.

Afternoon

Guided tour of the Mirabelle Centre in Rozelieures with tastings of specialities made from mirabelle plums.



* Sundays and foreign languages available for an additional fee

Cultural Nancy: Museums in Greater Nancy



🕒 1.5 hr ♿

€4.50 pp (excluding guide)

FINE ARTS MUSEUM

Closed on Tuesdays

Next to paintings signed by Tintoret, Caravage, Rubens, Delacroix, Monet, Modigliani and Picasso, works by a number of artists from Lorraine are on display: Claude le Lorrain, Émile Friant, Victor Prouvé, Étienne Cournault and Jules Bastien-Lepage. The Daum collection of glassworks allows the visitor to discover 100 years of production of the celebrated Nancy manufacturer. A permanent exhibition space is also dedicated to the work of Jean Prouvé.



€4 pp (excluding guide)

VILLA MAJORELLE

Closed on Mondays and Tuesdays, for groups morning visits only.

A work of the architect Henri Sauvage, this magnificent home was built for the artist and furniture designer Louis Majorelle and his family. Just a few hundred metres from the famous "Ecole de Nancy" Museum, the only museum in Europe entirely dedicated to decorative arts from the Art Nouveau period, it is a perfect complementary visit to the museum, shedding more light on the incredible creativity of the era.



CORDELIERS CHURCH / MUSEUM OF LORRAINE - PALACE OF THE DUKES OF LORRAINE

Closed on Mondays

During the construction to expand the Museum of Lorraine, Cordeliers Church (as well as its adjoining chapel) remain open with free entry. This major historical site of the Duchy of Lorraine is known as the "Saint-Denis" of Lorraine, as it is the final resting place for the dukes of Lorraine, with their tombs under a cupola inspired by the dome of Medici Chapel in Florence. The tomb niche of King René II is also presented here with a remarkable group of statues including the recumbent statue of Philippa of Guelders by Ligier Richier.



🕒 1.5 hr

€4 pp (excluding guide)

ÉCOLE DE NANCY MUSEUM

Closed on Mondays and Tuesdays

Situated on the property of Eugène Corbin, patron of the Nancy School, the museum and its gardens recreate the decorative and botanical styles of the era. The collections (unique pieces from Émile Gallé, Eugène Vallin and Louis Majorelle) are a testament to the diversity of techniques developed by the artists of this movement (furniture, glass objets d'art, stained-glass, leather, ceramics, textiles and more).

GUIDES OF THE TOURIST OFFICE

The guides of the Tourist Office can accompany you to the Beaux-Arts Museum (excluding the Galerie Poirel), the École de Nancy Museum and the Jean-Marie Pelt Botanical Garden.



GALERIE POIREL

Open Tuesday to Sunday, 2 p.m. to 6 p.m.

The Galerie Poirel is entirely dedicated to contemporary art and design. Its façade and square, dating to 1880, are the backdrop for the permanent work entitled "Traits d'union" by designer Robert Stadler that creates a dialogue between contemporary art, design and heritage.



🕒 2 hr

€3.10 pp (excluding guide)

FÉRU DES SCIENCES

Closed on Tuesdays

Families are invited to explore the world of science at Le Féru des Sciences, set in the magnificent grounds of the Château de Montaigu. The science and cultural centre features a hands-on experimentation area, a hanging oasis, the iron gallery, the machines room, the forge garden, and more. Have fun experimenting and trying to solve different scientific challenges. You can also learn all about a unique metal with a special significance for the region - iron. Find out how iron ore is mined and how iron is made, follow the history of iron and steel in Lorraine and discover the innovations it gave rise to. Tel: +33 (0)3 54 50 21 81
public-leferu@grandnancy.eu



🕒 1.5 hr ♿

€3.10 pp (excluding guide)

JEAN-MARIE PELT BOTANICAL GARDENS

No weekly closure

This 35-hectare park comprises over 12,000 plants: from common plants you would find in your back garden to exotic species originating from the most faraway lands (Alpine garden, tree garden, rose garden, medicinal plant garden, etc.). In the tropical greenhouses which span 2,500 m², observe carnivorous plants, giant Amazonian water lilies and threatened palms
Tel.: +33 (0)3 83 41 47 47
pedagogiecjb@grand-nancy.org



🕒 1.5 hr

€3.10 pp (excluding guide)

MUSEUM-AQUARIUM OF NANCY

Closed on Mondays

Nancy's Museum Aquarium boasts numerous aquatic species in tropical aquariums and a stuffed animal area representing global diversity. Original and educational temporary exhibitions on diverse themes are regularly scheduled.
Tel.: +33 (0)3 83 32 99 97
departement-public-MAN@grand-nancy.org

GOOD TO KNOW

Entrance is free of charge on the first Sunday of each month and free for under 26-year-olds and students.

Greater Nancy area

Greater Nancy encompasses 20 towns with various atmospheres, histories and features. From Sainte-Geneviève hill to the north, to the great Bosserville Charterhouse in the south, including the castles of Villers and Vandoeuvre, the vineyards of Dommartemont and the green islands of Tomblaine, the towns are brimming with architectural and natural treasures.

On the edge of the forest (the Haye Forest is the 2nd largest peri-urban forest in France), there are hundreds of kilometres of greenways and trails (both wild and maintained) for walking, studying nature, leisure activities or sports.

A selection of a few sites to discover:



🕒 90 minutes • 30 people maximum

NOTRE-DAME DE BONSECOURS CHURCH

Nancy

Closed to visits during services

Constructed from 1738 to 1741 and the first creation of Emmanuel Héré, Stanislaw's architect, this church was built on a sanctuary dedicated to the Virgin Mary. Devotion to Mary is very present in Polish piety, leading Stanislaw to choose the church for his tomb and for that of his wife as well.



🕒 90 minutes • 30 people maximum

LA DOUËRA

Malzéville

Meaning "little house" in Arabic, this stunning and extravagant Moorish dwelling from the late 19th century is a little Arabian palace on the edge of the Meurthe River. The eastern façade of the building is registered on the historical monument inventory, as are three of its rooms: the Persian lounge on the 1st floor, the Atelier and the Diwan on the 2nd floor.

Tel.: +33 (0)3 83 29 43 78 /+33 (0)3 83 29 92 30



🕒 1 hr • 20 to 40 people max.

FLÉVILLE CHÂTEAU

Fléville-devant-Nancy

Open from April to November for groups and schoolchildren by prior booking at least 15 days in advance.

Just near Nancy, Fléville Château invites visitors on a journey back in time with its feudal dungeon and Renaissance façade. This lovely building is also a family residence; the same family has lived here for more than two centuries, giving the dwelling a warm and lively atmosphere. Surrounding the castle is a large, romantic park, with the Remarkable Gardens label as well as an 18th-century orange grove.

Tel.: +33 (0)3 83 25 64 71 • contact@chateaufleville.com



🕒 1 hr • 20 people max.

MONTAIGU CASTLE AND ITS PARK

Laneuveville-devant-Nancy and Jarville-la-Malgrange

Open for guided tours only with prior booking at Le Féru des Sciences.

The former home of the collector Edouard Salin (1889-1970), this lovely manor house features collections that testify to the tastes of an enlightened enthusiast: objets d'art, 18th- to early 20th-century furniture, decorative arts and archaeology. The park is filled with plant varieties typical of 19th-century gardens and is open to all. Le Féru des Sciences is on the castle grounds.

Tel.: +33 (0)3 54 50 21 81
public-leferu@grandnancy.eu



🕒 90 min. to 2 hr • 20 people max.

BOSSERVILLE CHARTERHOUSE

Art-sur-Meurthe

Visits available by prior booking only.

One of the region's most beautiful 17th-century buildings is a precise and moving evocation of the daily lives of Carthusian monks. Its stones come from Nancy's fortifications that had recently been dismantled by Louis XIV. The beautiful classical façade reflects the waters of the Meurthe River.



🕒 90 min. • 20 people max.

CHÂTEAU OF MADAME DE GRAFFIGNY

Villers-lès-Nancy

Visits available by prior booking only.

In the heart of the old village, this 18th-century dwelling was refurbished in 1865. The mezzanine floor houses an art gallery. The garden boasts remarkable trees including Lebanon cedars planted by Mathieu de Dombasle in the 19th century.

Our holiday ideas

The incoming groups service assists you with planning an outing or a holiday, for component activities or an all-included package (meals, transportation, accommodation, shows, etc.).



From €49 pp

ESSENTIAL NANCY

Discover the not-to-be-missed sites

1/2 day

Morning or afternoon: tour of your choice and museum of your choice (see p. 22). + lunch.

From €49 pp.

Full day

2nd ½ day: tour and museum of your choice (see p. 22).

From €69 pp..



From €139 pp

NANCY ART NOUVEAU (2 DAYS / 1 NIGHT)

Experience the Belle Epoque

Day 1

- Afternoon: "Art Nouveau at the heart of business" tour (see p. 12), and visit of the Daum collection at the Fine Arts Museum (see p. 22).
- Dinner at the hotel.
- Overnight in a 3-star hotel .

Day 2

- Morning: "Art Nouveau on the edge of town" tour (see p. 13) and visit of the Ecole de Nancy Museum (see p. 22).
- Lunch.



From €39 pp

NANCY DESTINATION DE JARDINS

Breathe in the fragrances of days gone by

Morning

- "Historic city centre" tour (see p. 12) including Pepinière Park and the Godron Garden.
- Lunch.

Afternoon

Guided tour of the Jean-Marie Pelt Botanical Gardens (see p. 23) including the tropical greenhouses

Our prices, based on 20 people minimum, include: the guided tours and entry to the museums, the meal or meals mentioned excluding drinks, 1 overnight stay (where applicable) in a double room in a hotel (with breakfast), free for the driver. Drinks and transportation are not included. Tourist tax to be paid directly to the hotel on arrival. Additional fees for single rooms and guided tours on Sundays, public holidays and in languages other than French. Schedules are flexible according to opening days and times of the sites and museums



Experience the Saint-Nicholas Festivities in Nancy



Combining traditions and contemporary creations, Lorraine's biggest celebration brings tens of thousands of people to Nancy every year! 40 days of activities, illuminations, Saint-Nicholas villages (Christmas markets), gourmet chalets, crafts, activities for kids and more. The town celebrates patron saint of Lorraine as well as the values of togetherness and conviviality. Every year, a different country is the guest of honour.

THE HIGHLIGHT OF THE FESTIVITIES IS THE PARADE THROUGH THE STREETS OF THE CITY CENTRE. IN 2023, IT'S ON SATURDAY 2 DECEMBER!

From €149 pp

SAINT-NICHOLAS WEEKEND, 2 AND 3 DECEMBER 2023

Day 1

Afternoon:

- "Historic city centre" tour (see p. 12)
- Free time after the visit to discover the Saint-Nicholas villages (Christmas market) and city centre happenings: music, theatre and dance
- At the end of the day: parade of floats and a video projection on Place Stanislas
- Dinner at the hotel
- Overnight accommodation in a three-star hotel

Day 2

Morning:

- Visit of a museum of your choice (see p. 22)
- Lunch
- Free time after the visit to discover the Saint-Nicholas villages (Christmas market) and city centre happenings: music, theatre, dance.

Lorraine

Over the entire territory, our incoming groups service can draw up half-day, full-day or multi-day tours for your group. Call us for a costed proposal adapted to your needs.

SALT

Places of interest open to groups

- **Varangéville salt mine** (20 km): visit France's last working salt mine.
- **Dieuze Royal Salt Works** (45 km): a salt works operated since the Middle Ages.
- **Haraucourt Salt Museum and Observatory** (19 km): a unique site where visitors can learn all about Lorraine's salt industry from the 19th century through to the present day.

WOOD

Places of interest open to groups

- **Compagnons des Walsers at Mazerulles** (20 km): creation and restoration of wooden furniture.
- **Visit to a sawmill at Saint-Dié-des-Vosges** (90 km): learn about woodworking.
- **Visit to a chair and furniture manufacturer at Neufchâteau** (60 km): discover very specialised skills and watch a demonstration.

IRON

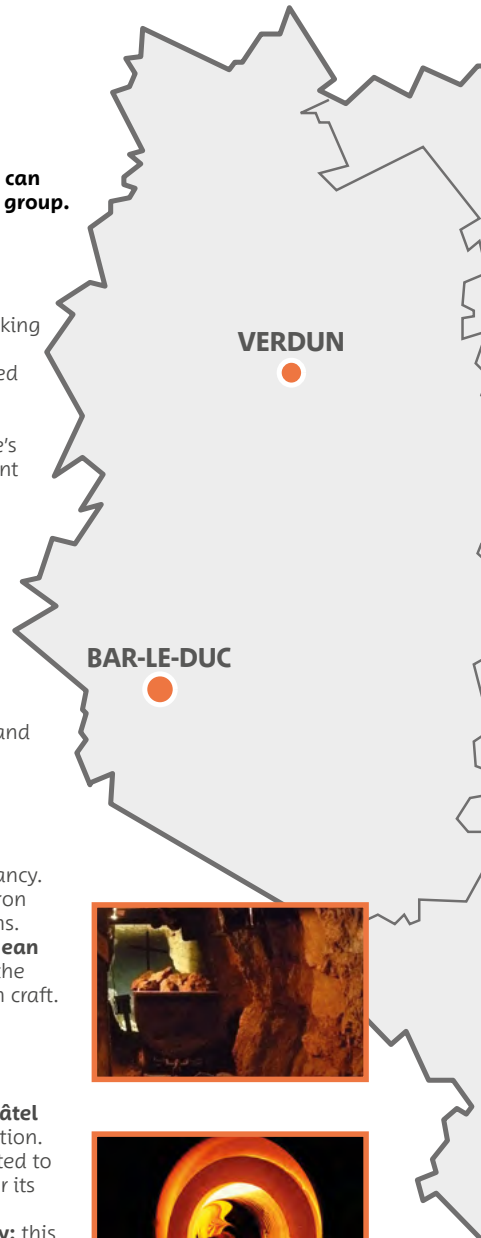
Places of interest open to groups

- **Le Féru des sciences at Jarville** less than 5 km from Nancy.
- **Neuves-Maisons Val de Fer Mine** (17 km): visit to an iron ore mine, with a look at the miners' working conditions.
- **Themed guided tour entitled "From Jean Lamour to Jean Prouvé"** in Nancy: a tour of the city centre looking at the major names from the history of Nancy's wrought-iron craft.

GLASS

Places of interest open to groups

- **Company of Glass-Blowers (CERFAV) at Vannes-le-Châtel** (40 km): tour of the site and glass-blowing demonstration.
- **Baccarat Crystal Museum** (60 km): a museum dedicated to the history of the famous crystal, known worldwide for its outstanding quality.
- **Themed guided tour of the Daum Collection in Nancy:** this tour tells the story of the Daum glassworks from its creation to the present day.





METZ

Discover Metz along diverse thematic itineraries including:

- **“Metz City”**: from Saint-Étienne Cathedral to the Citadelle district, from the Imperial quarter to the Amphitheatre district, the town is brimming with witnesses of its glorious past.
- **“Imperial District”**: an exceptional urban ensemble with a variety of influences in the typical, contrasted style of the early 20th century.
- **Visit Nancy and Metz** from 149€/pers. including a visit in each town, one night and 2 meals.



Meurthe-et-Moselle



LIVORDUN

Medieval village, panoramic view over the Moselle River, madeines

Distance: 19 km



NEUVES-MAISONS

The Val de Fer mine (guided tour by former miners)

Distance: 17 km

To Paris



THE VIN GRIS AND MIRABELLE ROUTE

Wineries and wine tasting



TOUL

Saint-Etienne Cathedral and cloister (12th-16th century), Collegiate church of Saint-Gengoult (14th-15th centuries)

Distance: 23 km



HAROUÉ

Family home of the princes of Beauvau-Craon, a remarkable 18th-century chateau with formal French and English landscaped gardens

Distance: 29 km



SION-VAUDEMONT

Sion Hill and basilica, the medieval village of Vaudémont and the Hill of 'stars' (fossils), stunning panoramic views.

Distance: 37 km

VERDUN

PONT-À-MOUSSON

FROUARD

LIVORDUN

NEUVES-MAISONS

VILLEY-LE-SEC

TOUL

VANNES-LE-CHÂTEL

GRAND

DOMRÉMY-LA-PUCELLE

THOREY-LYAUTEY

NEUFCHÂTEAU

SION-VAUDEMONT

ROSIÈRE-A

FER

HAROUÉ

To Metz
(55 km)

VILLEY-LE-SEC

Fort Séré-de-Rivière (XIX^e siècle)

Distance: 22 km



PONT-A-MOUSSON

Renaissance town centre and 18th-century Prémontrés Abbey
Distance: 30 km



SAINT-NICOLAS-DE-PORT

16th-century basilica where the relics of the patron saint of Lorraine are preserved, traditional procession in December, Brewing Museum.
Distance: 13 km



HARAUCOURT

Salt museum
Distance: 19 km



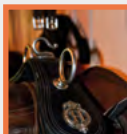
LUNÉVILLE

Château of the Enlightenment (17th-18th-centuries), French gardens, the 'Versailles of Lorraine'
Distance: 35 km



BACCARAT

World famous crystal, the crystal glassware workshop and museum
Distance: 60 km



ROSIÈRES-AUX-SALINES

Stud farm dating from the 18th-century and fine Renaissance buildings
Distance: 23 km



ROZELIEURES

Maison de la Mirabelle (Mirabelle museum, tasting and shop)
Distance: 44 km

FOR RESERVATIONS, PLEASE CONTACT US

Tel.: +33 (0)3 83 35 90 02

E-mail: reservations@destination-nancy.com

Useful information

➡ **Our incoming groups service is at your disposal**

- Book guided tours
- Purchase packaged holidays
- Tailor-made programs
- Personalised programmes in and around Nancy
- Quotes within a maximum of 72 hours
- Communication in French, in English or in German
- A single contact person for personalised service
- Tourisme & Handicap label guaranteeing an adapted welcome

➡ **MORE INFORMATION ON**

www.nancy-tourisme.fr > Groups Section

➡ **INFOS LABELS**

DESTINATION NANCY • Tourist Office



DESTINATION NANCY
labellisée



France congrès
Evénements • Tourisme

DESTINATION NANCY • Tourist Office

INCOMING GROUPS SERVICE: Tel.: +33 (0)3 83 35 90 02

reservations@destination-nancy.com

Opening hours of our service:

All year round (except on bank holidays)

Mondays : from 1pm to 5.30 pm

Tuesdays to Sundays : 9.30 pm to 1pm and from 2pm to 5pm.

Hotline on weekends and bank holidays if needed

Reception service: +33 (0)3 83 35 80 10.

www.nancy-tourisme.fr