

DESTINATION
→ NANCY
OFFICE DE TOURISME

PRESS KIT

Press contacts: Vincent Dubois · Clémentine Morel
email: vdi@destination-nancy.com · cml@destination-nancy.com
Tel: +33(0)3 83 35 90 07 · +33 (0)3 83 36 81 85

**métropole
GrandNancy**



Contents

[p. 3 > 6](#)

ABOUT THE COMPANY

[p. 7](#)

ACCESSIBLE NANCY

[p. 8 > 19](#)

WELLNESS DESTINATION

[p. 8 > 9](#)

Nancy Thermal

[p. 10](#)

Wellness activities

[p. 11 > 14](#)

Nancy, the stopover of choice
for cycling tourism

[p. 15 > 16](#)

Services for cyclists

[p. 17 > 19](#)

A remarkable natural environment

[p. 20 > 40](#)

AN EXCEPTIONAL HERITAGE

[p. 24 > 31](#)

Art nouveau

[p. 32 > 37](#)

The Old Town (Ville-Vieille)

[p. 38 > 40](#)

The Best of Greater Nancy

[p. 41 > 42](#)

Scientific heritage

[p. 43 > 44](#)

**PUTTING KNOW-HOW AND INNOVATION
IN THE SPOTLIGHT**

[p. 45 > 48](#)

GOURMET NANCY

[p. 49 > 54](#)

CULTURAL NANCY

[p. 49 > 51](#)

Main events

[p. 52 > 54](#)

Cultural institutions

[p. 55 > 56](#)

TO EXPLORE THE LOCAL AREA

About the company

DESTINATION NANCY is a Local Public Limited Company that aims to generate economic benefits and strengthen the tourist attractiveness of the Metropolitan area based on its numerous assets: its proximity to Paris (90 minutes by TGV), its human scale (ranked as the 3rd city where everything is within walking distance according to the newspaper Le Parisien), its cultural richness, dynamism, UNESCO heritage, and responsible commitments (being among the first destinations certified «Innovative Sustainable Destination»).

To successfully fulfill this mission, the DESTINATION NANCY teams manage:

- **the hosting of B2B and B2C events**
– trade shows, conventions, congresses, conferences, seminars - on the two sites it operates (Prouvé Congress Center and Parc Expo) as well as in various spaces across the Grand Nancy Metropolitan area (City Hall salons, Government Palace, Lorraine National Opera, etc.),
- **the organisation of B2B and B2C trade shows and events** at the Prouvé Congress Center and Parc Expo (Habitat Déco Salon, Crafts & Antiques, Expo Fair, Brewer's Salon, Beer Festival...),
- the touristic promotion with **the Metropolitan Tourist Office**, located Place Stanislas, listed on the UNESCO World Heritage list.



The Prouvé convention centre

Its goal? To create enthusiasm among organizers, tourists, and residents to experience exceptional moments within the Grand Nancy Metropolitan area!

DESTINATION NANCY is chaired by François WERNER, Vice-President of the Grand Nancy Metropolitan area and Mayor of Villers-lès-Nancy, and directed by Béatrice CUIF-MATHIEU. It is 82% owned by the Grand Nancy Metropolitan area and 18% by the City of Nancy.

HAPPY BIRTHDAY!

IN 2024...

DESTINATION NANCY will be celebrating the 10 years of its responsible engagement initiative, the 60 years of hosting professional events at the Parc Expo, and the 10 years of those held at the Prouvé Congress Center.



THE PROUVÉ CONVENTION CENTRE: A SUCCESSFUL CONVERSION IN THE HEART OF THE CITY!

The Prouvé Convention Centre, the successful conversion of a former postal sorting office, was inaugurated in 2014. Just a minute's walk from Nancy train station and the city's public transport hub, the Prouvé Convention Centre hosts events of all kinds across 20,000 m² of functional, modular and transparent spaces, all with natural lighting.

With three adjustable exhibition halls of 3,000 m², two 850- and 300-seater auditoriums extended by a naturally lit foyer, 13 meeting rooms and a panoramic reception area, with a breath-taking view of Nancy, accommodating up to 1,200 people, the Prouvé Centre has been designed to promote interactions and moments of sharing. The venue also provides 455 integrated parking spaces.

Its proximity to the centre of Nancy makes it possible to promote «all-on-foot» stays.

THE NANCY EXPO PARK: FANTASTIC MODULARITY TO BRING ALL PROJECTS TO LIFE !



The Nancy Expo Park

The Nancy Expo Park, located a few kilometres from the centre of Nancy, offers 15,320 m² of indoor covered spaces, spread over three main halls, along with 13,000 m² of outdoor spaces. Six rooms of 50 - 60 m² make it possible to host meetings, conferences and workshops. One 1,800-space car park allows the venue to welcome visitors. The park is accessible by public transport, free every weekend in the Greater Nancy area.

DESTINATION NANCY organises four events each year at the Expo Park:

- **The Home, Deco, Art and Antiques Fair**, from 15th to 19th february 2024
- **The Nancy Expo Fair** from 1st to 9th june 2024
- **The Brewers' Fair** from 17th to 18th october 2024
- **The Beer Festival** from 19th to 20th october 2024

THE CONVENTION OFFICE: MAKE EVERY EVENT A SUCCESS!



The Convention Office takes care of you

Composed of a team of three people, the Convention Office is the company's main point of contact for the organisation of events in the heart of the Greater Nancy area. This team accompanies organisers in the hosting of their events, supports their applications and provides them with a response adapted to their desired format, through:

- **Personalised support** and advice,
- **Management of contracts with accommodation** to guarantee the best rates,
- **The free establishment of a hotel-reservation platform**,
- **Registration management**,

- **The delivery of welcome kits/business gifts**,
- **The creation of a city-discovery programme**, related to the varied offerings of partner sites: Palais du Gouvernement, City Hall, Museum of Fine Arts, National Opera of Lorraine, etc.
- **Application support**,
- **Preparation of a hospitality pact**.



Scan this QR code to learn more about the Convention Office



THE METROPOLITAN TOURIST OFFICE

The Metropolitan Tourism Office joined the DESTINATION NANCY company on 1 January 2019. Classified as category one by Atout France and bearing the 'Qualité Tourisme', 'Tourisme et Handicap' and 'Accueil Vélo' labels, it is ideally located on Place Stanislas and ensures the following missions:

- **Welcoming and informing** visitors
- **Promoting the territory** and communicating with leisure-tourism clients
- **Marketing tourist services** to groups and individuals.

DESTINATION NANCY, DESTINATION ENGAGÉE !

For the past 10 years, DESTINATION NANCY has been committed to sustainable development and has confirmed its pioneering position through concrete actions and certifications that ensure the seriousness of its approach. The company is ISO 20121 certified, an international standard for responsible event management, covering all its activities. This certification assures clients and visitors that the certified company has deeply embedded sustainable development values in its operations, including strategy, procurement, operational organization of events, infrastructure, and communication.

In 2020, the Metropolitan Tourist Office became the first in France to receive this distinction. In 2022, DESTINATION NANCY was among the first 5 French destinations to be certified «Innovative Sustainable Destination» for its commitment to sustainable tourism, and it successfully renewed this label in 2023.

DESTINATION NANCY deals daily with issues such as food waste, inclusion, and waste management through its various activities. This year, DESTINATION NANCY is celebrating the 10th anniversary of its responsible commitment and has planned enhanced communication on the subject, including adapting its logo to a more engaged version and implementing a new route for visitors at the Centre Prouvé, among other initiatives

Pour plus d'informations :

<https://destination-nancy.com/en/sustainable-and-innovative-destination/>



ILLUSTRATIONS OF DESTINATION NANCY TEAMS' DAILY COMMITMENT AS PART OF THE COMPANY'S FOUR MISSIONS:

HOSTING OF EVENTS AT THE PROUVÉ CONVENTION CENTRE AND THE EXPO PARK

- **Fighting food waste** with over four tonnes of food donated to the Banque Alimentaire food bank since 2017
- **All actors in sobriety:** energy sobriety plan, photovoltaic panels, and rainwater collector at the Prouvé Center
- **Sustainable catering:** caterers selected based on sustainable criteria: local and seasonal products, vegetarian options, etc.
- **Stop to plastic** plastic bottles removed at the Prouvé Center in favor of returnable glass bottles: 7500 bottles avoided each year.

ORGANISATION OF EVENTS AT THE PROUVÉ CONVENTION CENTRE AND THE EXPO PARK

- **Highlighting local committed exhibitors and businesses**
- **Visitor awareness workshops:** energy savings, zero waste, waste sorting, DIY, woodworking, bio-based materials, etc.
- **New solidarity village at the Expo Fair**
- **Waste management:** partnership with Citéo to encourage sorting, awareness for exhibitors and visitors, investment in more visible sorting bins, carpet donated after events, etc.

THE CONVENTION OFFICE

- **Selecting local and sustainable gifts**
- **Highlighting regional know-how**
- **Delivering welcome gifts on foot or by bike**



Eco-friendly shop
at the tourist office

DESTINATION NANCY - METROPOLITAN TOURIST OFFICE

- **Accessibility for all thanks to new guided tours for people with disabilities:** tours in sign language, accessible for people with reduced mobility, and adapted to those with mental disabilities.
- **Adapted brochures:** City guide in braille alphabet, Easy to Read and Understand (FALC) document, brochures dedicated to people with reduced mobility, etc.
- **Eco-friendly shop:** local and sustainable products.
- **Local craftsmanship highlighted in the Arty shop:** The Metropolitan Tourist Office is the first in France whose shop is labeled «Craftsmanship» by a regional mission.
- **Bike Welcome Label (« Accueil Vélo »):** the guarantee of quality service for cyclists.
- **Nature and well-being tours:** forest therapy, fitness initiation with a coach combined with the discovery of the city parks' fauna, exploration of the medical and gustatory virtues of plants.



More information on: <https://destination-nancy.com/en/sustainable-and-innovative-destination/>



1
of the most beautiful
places in the world

55 000
students



N°1 in Lorraine
for shopping...
(covered market and shopping
centre 3 minutes' walk from the
train station)

21180
businesses



More than
3 510
hotel rooms



including
1500
of them are less
than 10 minutes
by foot from the
city center



4
competitiveness
hubs



4
«Remarkable
Gardens»
(tourism label)



THE WHOLE
city centre easily
accessible on foot

↔ **accessible** ↔

Nancy

BY TRAIN

Nancy Direct 1h30 Paris Est	Nancy* Direct 5h00 Bordeaux	Nancy 4h40 Nantes
Nancy Direct 1h15 Strasbourg	Nancy* Direct 45' Reims	Nancy 4h30 Lyon
Nancy Direct 2h30 Dijon	Nancy 1h40 Luxembourg	Nancy 3h10 Lille

TRAM AND BUS

There are park & ride facilities on the outskirts of the city.
Public transport is free at weekends.
Bookings :
Allostan +33 (0)3 83 30 08 08
www.reseau-stan.com

NANCY TRAIN STATION

Nancy train station in the city centre and located 1 minute walk from the Prouvé Convention Centre.
3, place Simone Veil
Tel. : 33 (0)8 36 35 35 35

LORRAINE TGV TRAIN STATION

* Located 30 minutes by bus/shuttle and by car from the Nancy train station.
Departmental route 910
57420 LOUVIGNY
www.sncf-connect.com

BY PLANE

Nancy Direct 1h40 Toulouse	Nancy Direct 1h40 Marseille	Luxembourg 1h35 Nice
-----------------------------------	------------------------------------	-----------------------------

REGIONAL AIRPORT OF METZ - NANCY - LORRAINE

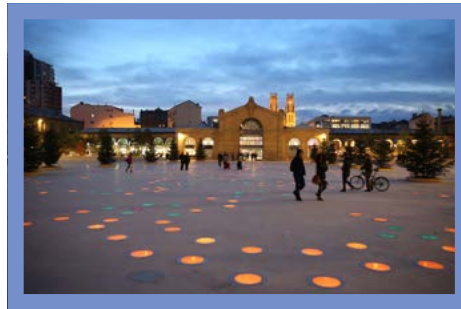
30 minutes from Nancy by car or shuttle bus from the Nancy train station.
57420 GOIN
Tel. : +33 (0)3 87 56 70 00
Timetable on the airport website:
www.lorraineairport.com

GREAT NANCY AEROPOLE

54510 TOMBLAINE
Tel. : +33 (0)3 83 21 56 90
www.nancy.aeroport.fr

LUXEMBOURG INTERNATIONAL AIRPORT

75 minutes from Nancy by car



Place Simone Veil
©Métropole du Grand Nancy

Wellness destination

In the spring of 2023, Nancy became a wellness destination with the opening of Nancy Thermal, the first and only aquatic and thermal establishment in France located in the heart of a metropolitan area. As a result, the city hopes to adopt a new tourist positioning.

NANCY THERMAL

HISTORY

Nancy Thermal was born from a project dating back to the beginning of the last century, when the Nancy architect Louis Lanternier discovered a thermal spring for the first time, while drilling 800 metres deep under the Sainte-Marie Park. He exhibited this discovery at the International Exhibition of Eastern France in 1909, before setting to work creating a thermal establishment from this spring. Though part of the establishment was inaugurated in 1913, the project's development

was halted as a result of the First World War and the economic consequences of this global conflict. From 2019 onwards, the Greater Nancy Metropolitan Area has since taken over the project and works.

To relive the 1909 International Exhibition of Eastern France, a dedicated video is available on the DESTINATION NANCY YouTube channel. (see p.44)

In 1911, the National Academy of Medicine gave a favourable opinion on the use of Nancy's thermal water for therapeutic purposes, and it was in 2014 that this thermal water was once again recognised by the latter for its rheumatological benefits. Nancy Thermal is therefore an ideal place to combine relaxation and the treatment of conditions ranging from rheumatological to trauma.



Nancy Thermal
©Vincent Damarin

SPOTLIGHT ON THE THERMAL COMPLEX

Adjoining the Sainte-Marie Park and just a stone's throw from the Art nouveau Museum, Nancy Thermal is a wellness, fitness, relaxation and health complex offering a multitude of activities across three spaces, supplied with thermal water and open to all:

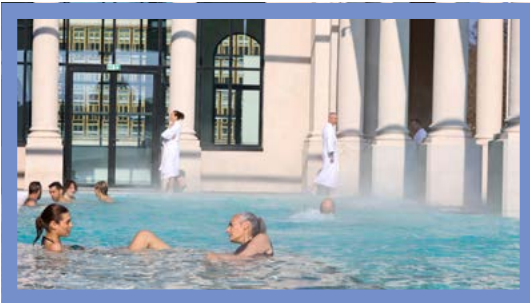
- **The leisure and sports area** offers indoor and outdoor spaces with water games spanning 400 m² and pools spread over 2,100 m², of which 1,900 m² are open all year round. Discover a range of spaces dedicated to physical activity, from a 50 m Olympic pool to a fitness area.



The leisure and sports area
© Vincent Damarin

Adult aqua space admission: €7.60
Child aqua space admission: €5.20
Adult Aquasports Area 10-entry pass: €70

- **The Thermal Spa** is a space dedicated to wellness, where users can enjoy a 100% natural thermal mineral-water experience, with indoor and outdoor pools equipped with



The Thermal Spa
©Métropole du Grand Nancy

hydromassage jets, swan necks and bubble beds, a tea shop, a musical cave, a solarium, a sauna and rest area. The iconic round pool can also be found in this space.

Adult two-hour pass: €19.90

The Wellness area, a real invitation to relax and unwind, consists of jacuzzis - including one outdoor hot tub - along with a waterfall, a sauna, a steam room, a solarium with terrace and rest areas.

Adult two-hour pass: €27.60 The spa institute invites you on a journey to relax the body, enjoying a moment that's just for you.

- **The health area:** Rheumatological thermal treatments are offered in classic or premium versions, with a host of complementary programmes and mini health treatments. To enjoy these thermal benefits, a day of rheumatological thermal discovery has been put together with three treatments and a relaxation session in the Thermal Spa (€49/person).

A hotel residence with direct access to the various spaces, parking spaces, a day-care service and a shop are also available.

As part of an eco-friendly approach, Nancy Thermal uses heating, water-filtration and thermal-cover systems that limit its energy costs.

It is important to remember that the site's thermal water is naturally hot, with a temperature close to 37° and that, as it is highly mineralised, it cannot be used for drinking water, industry or irrigation.

<https://www.nancythermal.fr/>



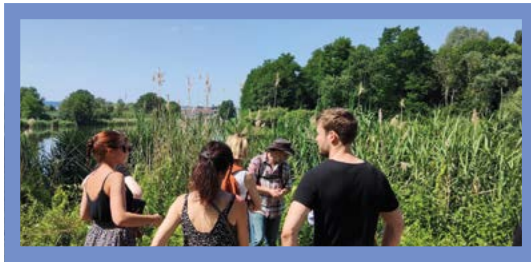
Nancy Thermal
© Vincent Damarin

WELLNESS ACTIVITIES OFFERED BY DESTINATION NANCY

The Greater Nancy Metropolitan Area is becoming a wellness destination with the opening of Nancy Thermal. Visitors can now enjoy various relaxation and leisure activities, including those offered by DESTINATION NANCY.

NATURE WALK

The nature walk is a guided tour with a guide specialised in natural heritage. It combines outdoor relaxation and the discovery of part of the city of Nancy, allowing you to visit the Rives de Meurthe district, while learning more about the flowers and plants that border the Meurthe. The expert guide explains the origin of flowers to visitors, their uses in cooking and medicine, and all their benefits.



Nature walk

NATURE TRAINING

Nature training is an activity in itself, combining outdoor fitness and discovery of the city of Nancy, alongside a professional, certified nature activity leader and sports coach.

The nature coach introduces the fauna and flora of the city step by step, during a 2 to 3 km run, punctuated by muscle-building sessions along the banks of the Meurthe.



Nature training

URBAN ROUTES AND HIKES

For people wanting to discover Nancy and its must-sees, golden nails on the ground and signage panels guide visitors to independently explore three pedestrian tourist routes: the historic center, Art Nouveau, and the Rives de Meurthe district (see page 55).

To delve deeper into the exploration of the region, the Metropolitan area of Grand Nancy, in collaboration with the French Hiking Federation (FFRP), has established 21 hiking loops totaling nearly 210 km of trails. These itineraries are organized around 5 themes: aquatic strolls, nature in the city,

between city and countryside, history and heritage walks, and hillside and forest strolls.

Marked by protected and iconic sites, these trails provide a great opportunity to escape beyond the limits of the historic city center. These 21 routes are available on the Cirkwi hiking app, which also provides access to a wide selection of routes in different municipalities of the Metropolitan area, enhancing the discovery experience for all levels.

<https://www.nancy-tourisme.fr/en/to-see-to-do/leisure/walks-and-routes/>

NANCY, THE STOPOVER OF CHOICE FOR CYCLING TOURISM

At the crossroads of the major European cycling routes, the Greater Nancy Metropolitan Area is located on some important European cycle paths:

- The Marne Valley Véloroute, connected to some cycling routes : Paris-Strasbourg and Paris-Prague (V52 - from east to West)
- V50, the Voie Bleue- Moselle-Saône by bike, links in with other European cycle routes : EuroVelo n°17, 5 and 6 (from north to south)



THE LOOP OF THE MOSELLE, AN OFFICIAL VARIANT OF LA VOIE BLEUE:

The Loop of the Moselle is a cycle route on a closed 85 km circuit, based on the remarkable natural site of a perfect loop - almost completely closed off - along the meanders of the Moselle. At this point, the Moselle is overlooked by an escarpment on which the town of Liverdun rests, just before following a straighter and wider course to the north and towards Metz.

The wooded landscapes and gentle countryside of the Pays de Toul and Liverdun are connected to Nancy from the north or south via the banks of the canal; as a result, the Loop of the Moselle offers cyclists a remarkable natural and scenic escape, as well as stunning views and exceptional urban tourist sites on an easy and flat route.

<https://www.boucladelamoselle.fr/en/home/>

<https://bit.ly/boucladelamoselle>

THE VOIE BLEU - MOSELLE-SAÔNE (V50):

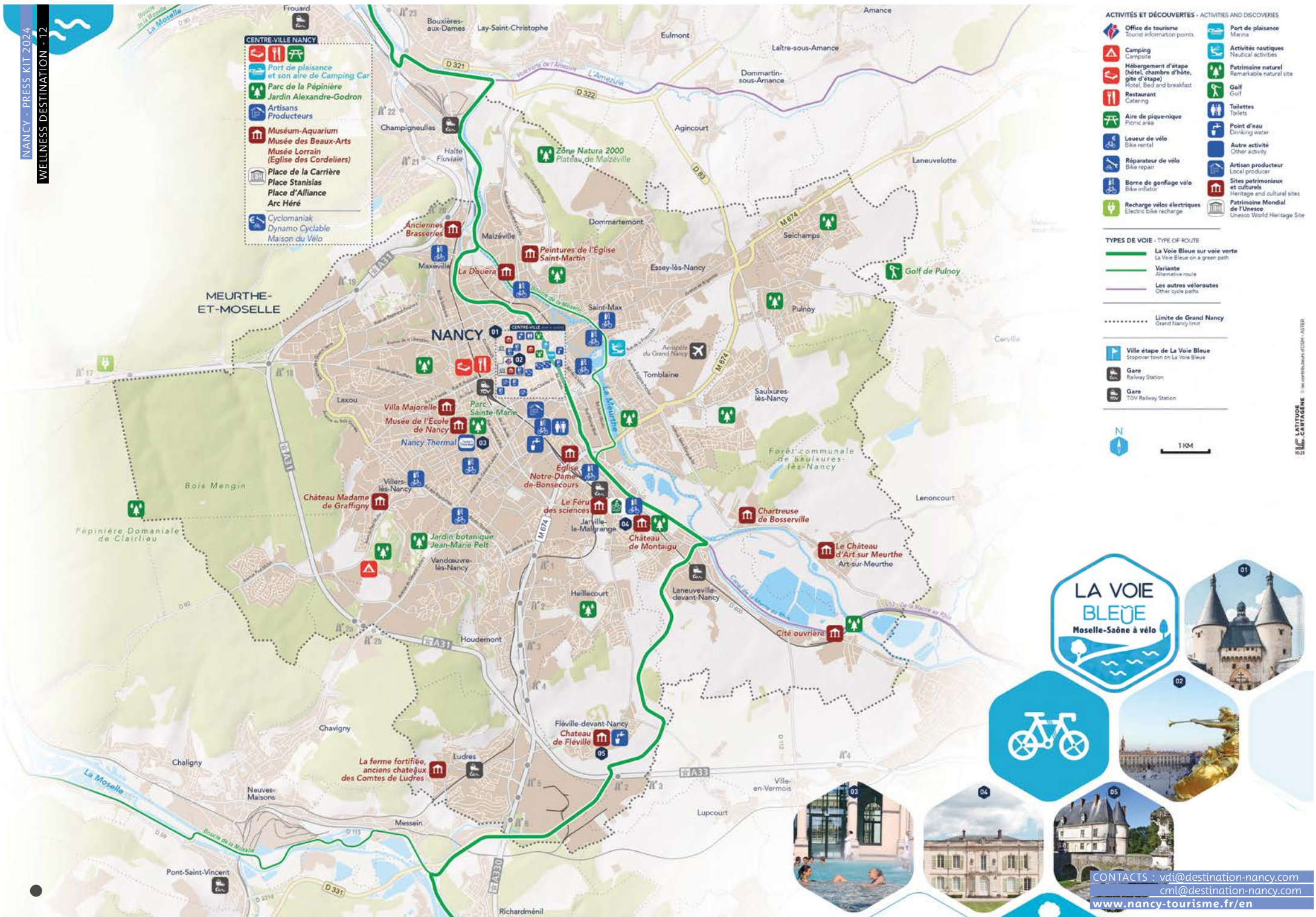
The Voie Bleue - Moselle-Saône route is a national cycle route that extends from the Luxembourg border to Lyon, covering nearly 700 km along the Moselle, the Vosges Canal and the Saône.

Crossing France from north to south, the route has a low elevation gain - making it all easily accessible - and is located near waterways, perfect for nature lovers hoping to discover natural settings with significant heritage.

<https://en.lavoiebleue.com/cycle-route>



La Boucle de la Moselle



- CENTRE-VILLE NANCY**
- Port de plaisance et son aire de Camping Car
 - Parc de la Pépinière
 - Jardin Alexandre-Godron
 - Artisans Producteurs
 - Muséum-Aquarium
 - Musée des Beaux-Arts
 - Musée Lorrain (Eglise des Cordeliers)
 - Place de la Carrière
 - Place Stanislas
 - Place d'Alliance
 - Arc Héré
 - Cyclomaniak
 - Dynamo Cyclable
 - Maison du Vélo

- ACTIVITÉS ET DÉCOUVERTES - ACTIVITIES AND DISCOVERIES**
- Office de tourisme / Tourist information points
 - Port de plaisance / Marina
 - Camping / Campsite
 - Activités nautiques / Nautical activities
 - Hébergement d'étape (hôtel, chambre d'hôte, gîte d'étape) / Hotel, Bed and breakfast, Remarkable natural site
 - Restaurant / Catering
 - Aire de pique-nique / Picnic area
 - Patrimoine naturel / Remarkable natural site
 - Golf
 - Toilettes / Toilets
 - Point d'eau / Drinking water
 - Leouer de vélo / Bike rental
 - Autre activité / Other activity
 - Réparateur de vélo / Bike repair
 - Artisan producteur / Local producer
 - Borne de gonflage vélo / Bike inflator
 - Sites patrimoniaux et culturels / Heritage and cultural sites
 - Recharge vélos électriques / Electric bike recharge
 - Patrimoine Mondial de l'Unesco / Unesco World Heritage Site

- TYPES DE VOIE - TYPE OF ROUTE**
- La Voie Bleue sur voie verte / La Voie Bleue on a green path
 - Variante / Alternative route
 - Les autres véloroutes / Other cycle paths

- Limite de Grand Nancy / Grand Nancy limit
- 🚶 Ville étape de La Voie Bleue / Stopover town on La Voie Bleue
- 🚉 Gare / Railway Station
- 🚊 Gare / TVV Railway Station



LA VOIE BLEUE
Moselle-Saône à vélo

CONTACTS : vdi@destination-nancy.com
cml@destination-nancy.com
www.nancy-tourisme.fr/en

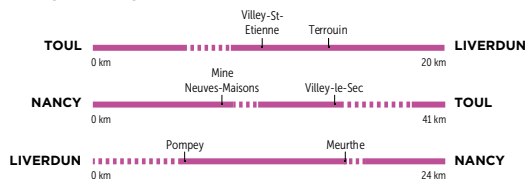
- Offres de Tourisme
Tourismbüro
VV
- Aires de camping car
Wohnmobilplätze
Camperplaats
- Haltes fluviales
Anlegplätze
Anlegplaats
- Restauration
Restaurants
Restaurant
- Produits du terroir
Regionale Produkte
Streekproducten
- Hôtels
Hotels
Hotels
- Gîtes, meublés de tourisme
Ferienwohnung
Vakantiewoning
- Chambres d'hôtes
Gästezimmer
B&B
- Campings
Campingplätze
Fietshuur
- Hébergements insolites
Außergewöhnliche Unterkünfte
Ongebruikelijke accommodatie
- Points de vue
Aussichtspunkt
Uitzichtpost
- Patrimoine historique
Geschichtsrbe
Historisch erfgoed
- Patrimoine industriel
Industrieerbe
Industrieel erfgoed
- Patrimoine naturel
Natureerbe
Natuur
- Villages viticoles
Wenddorfer
- Espace naturel sensible
Naturschutzgebiete
Beschermd natuurgebied
- Station verte
- Station pêche
Angelstation
- Piste cyclable
Radweg
Fietspad
- V50 - La Voie Bleue
- Connexions voies vertes
Radwegverbindungen
Groene fietswegen verbindingen
- Parours pédestres
Wanderwege
- Parours VTT sportif
Mountainbikewege
- Route des vins
Wijnroute
- Réparateurs
Fietse maker
- Location de vélos
Fahrradverleih
Fietshuur
- Accueil vélo
- Beaues villages lorrains
Lohringische Dörfer

Conception graphique
et cartographie :
Arnaud Codazzi & Co



3 circuits familiaux à faire dans la journée

3 familienfreundliche Strecken für eintägige Ausflüge
3 dagcircuits voor het gezin



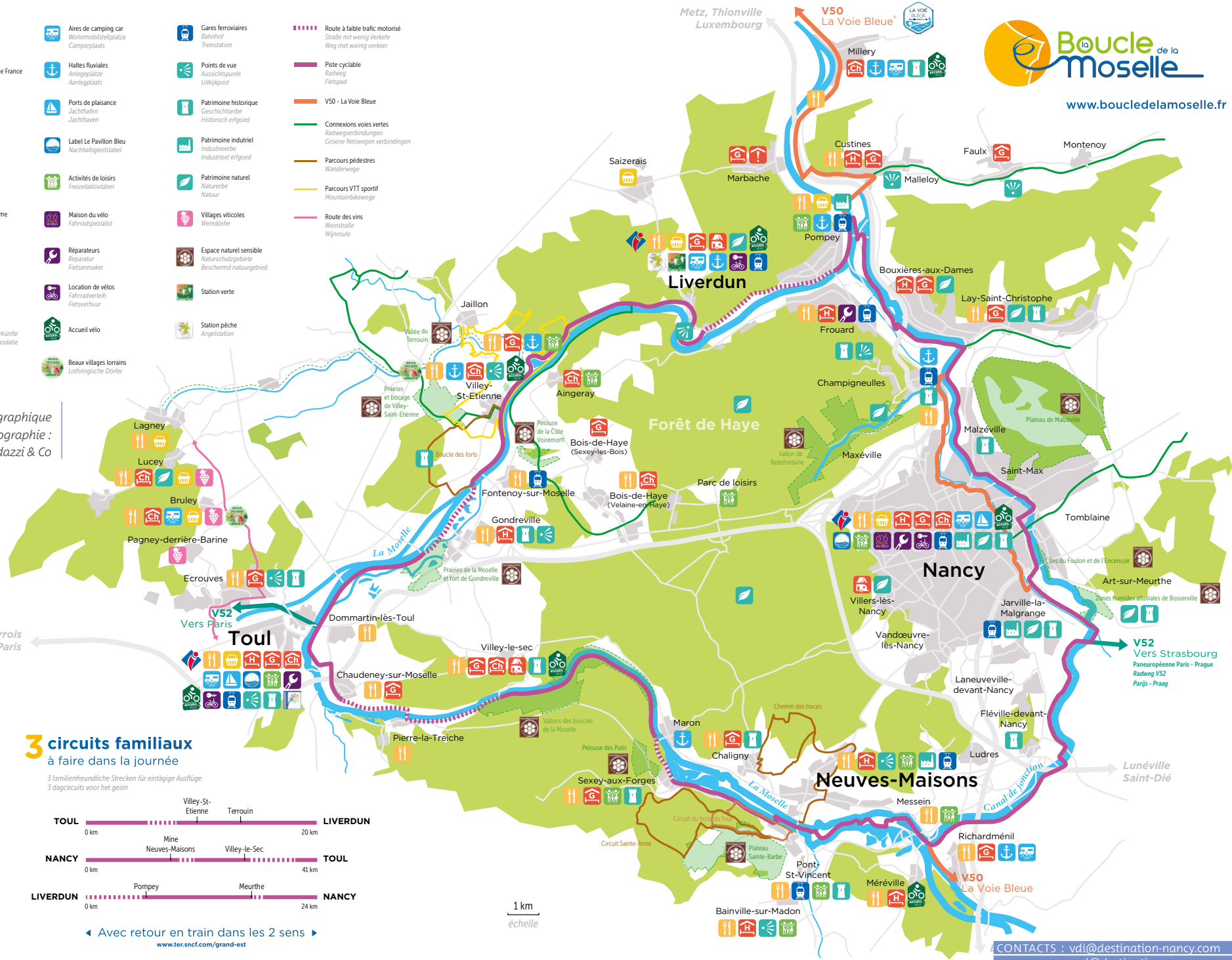
← Avec retour en train dans les 2 sens →

www.ter.snct.com/grand-est

1 km
échelle



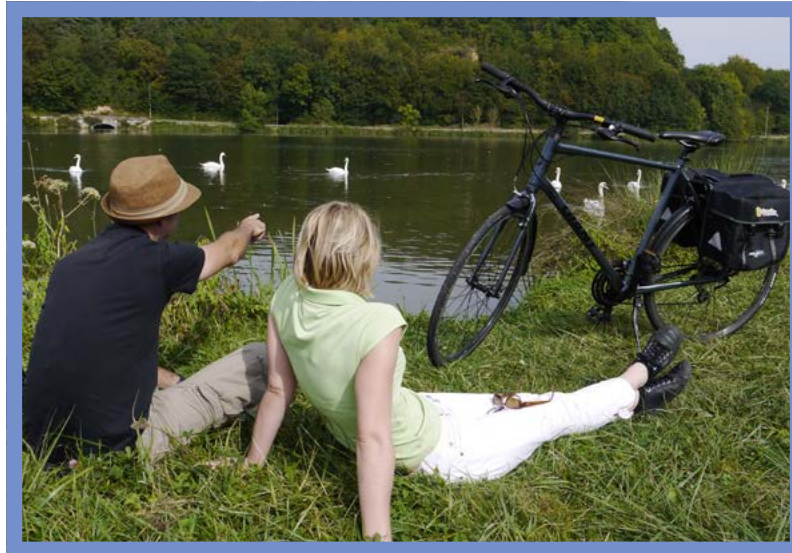
www.boucledelamoselle.fr



CONTACTS : vdi@destination-nancy.com
cml@destination-nancy.com
www.nancy-tourisme.fr/en



Canal
©Arnaud Codazzi



The Loop of the Moselle

BETWEEN COUNTRYSIDE AND URBAN HERITAGE

Around an 85 km signposted route along the loop of the Moselle, equipped with amenities, the tourist offices of Toul, Liverdun and Nancy work together on this «mixed» product to communicate:

- a coherent, landscaped, green, sporty and eco-friendly tourist route in the Lorraine countryside, as well as
- a remarkable offering of heritage and history in the towns of this triangle: Nancy, Toul and Liverdun.

LEISURE AND SPORT

Another unique feature of the Loop of the Moselle is its intermodality - train, road and river - promoting a diverse range of practices and allowing visitors to pair leisure cycling tourism (preferred to sporting practice by 90% of people) with other activities on water or land. Featuring short cycle routes of 30 and 60 km, it offers both an original idea for a stage of a longer journey (in Lorraine, regional trains welcome bicycle free of charge) and a great opportunity for Sunday outings by the water. For those without bikes, rentals are available on-site from the Maison du Vélo Great Nancy Cycle Centre.

THE MARNE VALLEY VELOURUTE (V52), A ROUTE UNDER DEVELOPMENT:

Crisscrossing UNESCO World Heritage-listed landscapes and the Montagne de Reims Regional Nature Park for nearly 45 km, the Marne Valley Véloroute cycle path extends along the Canal Latéral until it reaches the Marne, offering a unique and varied landscape and located on the Paris-Strasbourg National Route No 52. This is a route presenting an effective way to discover the natural heritage that surrounds it.



The Loop of the Moselle

SERVICES FOR CYCLISTS

THE 'ACCUEIL VELO' CYCLE-FRIENDLY LABEL ACROSS THE METROPOLITAN AREA

Tourist Office works to promote the 'Accueil Vélo' cycle-friendly label with its partners, such as accommodation sites, cultural institutions and services.

Today, the Tourist Office and a further 15 other certified establishments throughout the local area, including nine tourist-accommodation establishments, hold this label:

- Greater Nancy Maison du Vélo Cycle Centre
- City of Nancy Marina
- Museum and Aquarium
- Féru des Sciences
- Grand Hotel de la Reine
- Ibis Styles Nancy Centre Gare
- Ibis Budget Nancy Centre
- Novotel Suites
- Hôtel d'Haussonville
- Résidence Adagio
- Mercure Centre Stanislas
- Hôtel Campanile
- Le Clos Jeannon
- Cyclomaniak (bike repair service)
- Dynamo, the Bike Workshop

Routes can also be downloaded for free from the website:

<https://www.nancy-tourisme.fr/en/to-see-to-do/leisure/explore-greater-nancy-by-bike/>

REMINDER: WHAT IS THE ACCUEIL VÉLO LABEL?



Easily recognised by its logo representing a white cyclist on a green background, the «Accueil Vélo» label is a national accreditation that guarantees quality

service and reception along cycle routes, with adapted equipment and services: secure bike shelter, repair kit, luggage transfer, laundry services, rental of bikes and accessories, and more.

THE MAISON DU VELO CYCLE CENTRE

The Maison du Vélo is an 'Accueil Vélo' labelled cycle-friendly establishment, open to all cyclists and those hoping to get started in the sport. It offers various services, including bike rentals (discounted rates with the Nancy City Pass).

<https://maisonduvelo.grandnancy.eu/accueil>

VELOSTAN'LIB

VéloStan is a self-service bike rental service that allows anyone to rent a bike for a short time in the Greater Nancy area.

Available 24/7, there are currently more than 30 VéloStan stations located throughout the metropolitan area, with 250 bikes.

A price per day is offered to tourists passing through the city. Nancy City Pass holders benefit from a reduced rate.

<https://www.velostanlib.fr/fr/offers/groups/list#580289>

THE DEVELOPMENT OF CYCLE PATHS

The City of Nancy is committed to a 100% eco-friendly policy and plans to develop no less than 200 kilometres of safe cycle paths by 2026 (248 kilometres by 2035).



La Maison du Vélo

PEDESTRIANISATION OF THE CITY CENTRE

A pedestrian path in the centre of Nancy from the Porte de la Craffe in the Old Town to the shopping area of Ville-Neuve was opened on 16 September 2022. What's more, pedestrian-tourist signage has been gradually implemented since autumn 2022 (see page 53).

FREE PUBLIC TRANSPORT ON WEEKENDS

Alongside this pedestrianisation, it is now easier to get around the area without a car thanks to the network of public transport, facilitating access to all the tourist sites of the metropolitan area. Visitors are further encouraged to use these services as the Stan network is free every weekend and all year round for residents of the metropolitan area under the age of 18. During the week, tourists can also benefit from the network free of charge thanks to the Nancy City Pass (see p.56).

FOR MORE INFORMATION :

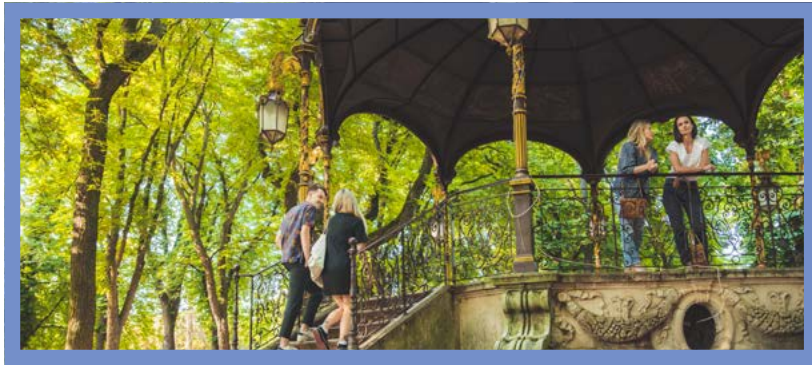
- Our website:
<https://www.nancy-tourisme.fr/a-voir-a-faire/loisirs/randonnees-et-cyclo-tourisme/>
- The Loop of the Moselle:
www.boucladelamoselle.fr
- The Maison du vélo:
<https://maisonduvelo.grandnancy.eu>
- Metropolitan Mobility Plan:
<https://www.grandnancy.eu/construire-lavenir/plan-metropolitain-des-mobilites>
- Info about 'Accueil Vélo' cycle-friendly label:
<https://www.francevelotourisme.com/accueil-velo>
- YouTube promotional video of the Loop of the Moselle:
<https://bit.ly/boucladelamoselle>

A REMARKABLE NATURAL ENVIRONMENT

Nancy is one of the greenest and floral cities in France. In fact, the metropolitan area has nearly 300 hectares of green spaces, divided into urban parks, floral blocks and promenades all close at hand (less than 10 minutes apart), allowing walkers to discover a rich diversity of plants in the great outdoors. What's more, the local area is bordered by one of the largest forests in France, the Haye Forest.

No less than four parks have been classified as 'Remarkable Gardens', with some of these spaces awarded the 'Tourisme et Handicap' accessible-tourism label.

UNMISSABLE PARKS AND GARDENS



The bandstand in the
Pépinière Park
©Pierre de Fontaine

LA PEPINIERE PARK, GREEN LUNG OF THE HISTORIC TOWN CENTRE

Located in the heart of the historic centre and opening out onto Place Stanislas, the La Pépinière Park offers up a real haven of greenery in the heart of the city, with a host of leisure activities: an animal area, mini-golf, a playground, several catering/snack areas, as well as a rose garden and a famous Rodin statue in the centre. A water mirror was installed in 2022.

Alone or with family, the park is an unmissable site in which to enjoy a breath of fresh air.

A CONTEMPORARY GARDEN, THE WATER GARDEN

Located on the banks of the Meurthe Canal and entirely designed by the famous landscaper Alexandre Chemetoff in 1996, this water garden features some unique vegetation composed of aquatic plants, water jets and pools that invite walkers to enjoy a permanent aquatic show.

Seven pools have been designed according to a specific plant theme: the Iris canal, the Reed Bed basin, the Cattail pond, the Water Mirror pond where submerged plants grow and the Water Jet pond.



AN ART NOUVEAU GARDEN, THE GARDEN OF THE ÉCOLE DE NANCY MUSEUM

Listed in the additional inventory of Historic Monuments, the garden of the École de Nancy Museum is inspired by English gardens and evokes the atmosphere of a turn-of-the-century garden with vegetation created by Nancy horticulturists. There, visitors can discover the tree and plant species that inspired the artists of the École de Nancy. It also features three Art Nouveau elements: an aquarium pavilion with stained-glass windows by Jacques Gruber, a funerary monument and the oak door of the former establishments of Emile Gallé, inscribed with his motto» My root is at the bottom of the woods».

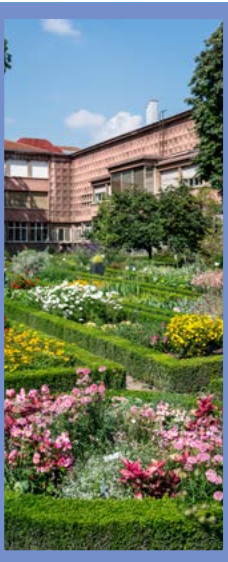


The garden of the École
de Nancy Museum
©Régine Datin

The water garden
©Julie Fort



Victor Lemoine's bust
©Régine Datin



The Godron garden
©Régine Datin

THE SAINT-MARIE PARK



Located just a stone's throw from the École de Nancy Museum and Nancy Thermal, the Sainte-Marie Park has some remarkable gardens and trees. Today, it is a public garden and city property. It was at this location that the International Exhibition of Eastern France was held in 1909 (see page 42).

DOMINIQUE ALEXANDRE GODRON GARDEN



Located just a few steps from Place Stanislas, behind the Museum and Aquarium, the recently restored Dominique Alexandre Godron Garden was Nancy's very first botanic garden and is home to various impressive species.

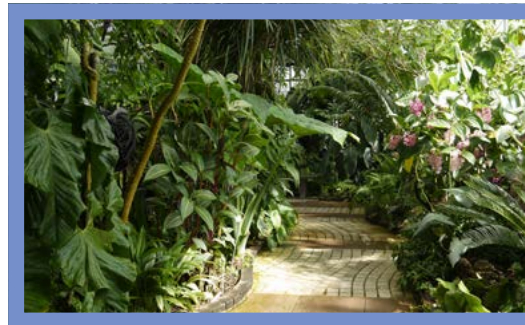
THE JEAN-MARIE PELT BOTANIC GARDEN



A veritable museum of plants that testifies to the extraordinary wealth of the plant world, with more than 12,000 species in cultivation, this botanic garden has become one of the most important botanical facilities in France and houses 2,500 m² of tropical greenhouses. A fantastic journey for an explorer in search of a permanent touch of exoticism. The park is freely accessible, while entry to the greenhouses is paid. The botanical garden is co-managed by the Métropole du Grand Nancy and the University of Lorraine.



The château de Fléville garden
©Régine Datin



Tropical greenhouses of the Jean-Marie Pelt botanic garden
©Julie Fort



THE CHATEAU DE FLEVILLE GARDEN



Opposite the 18th-century orangery, the 'landscape garden' presents the charm of its rose garden to visitors. The space is also dotted with fruit trees.

As well as this garden, recognised as a 'Remarkable Garden', a vast romantic park surrounds the private castle, still inhabited but open for tours (see page 36) with its greenery. It follows an 18th-century garden created by a disciple of Le Nôtre: wide views, snaking alleys, skylights and water mirrors, not forgetting the island and its beautiful Art-Nouveau bridge.

THE CHÂTEAU DE MONTAIGU PARK

Straddling the communes of Jarville-la-Malgrange and Laneuveville-devant-Nancy, this park offers two sites open to visitors - the Fêru des Sciences on one side and the Château de Montaigu on the other (see pages 39-40). Spanning a total area of 14 ha, its development is inspired by the romantic park: a clearing of hundred-year-old trees and ponds. The water mirror and the tree-lined walkway, on the other hand, take their inspiration from French gardens.

Recently, Jean-François Chevalier's 'Gueules d'Enger' sculptures, in homage to the steelmakers of the former Pompey steel mills, were installed there.

Water mirror of the Château de Montaigu
©Régine Datin

HAYE FOREST

Located in the heart of a loop of the Moselle, the Haye state forest extends over more than 6,000 ha on the edge of the Greater Nancy Metropolitan Area, offering up a beautiful space for walks to 1.5 million visitors each year – on foot, horseback or bicycle. Classified as a 'protected forest' in 2018, part of the forest – the Fond de Monvaux – has also been listed as a Natura 2000 site.

In addition to hiking, a host of leisure activities are also possible within this leisure park spanning over 200 ha: sports, tree climbing, car museum, restaurants and more.



The Haye forest

THE NATURA 2000-CLASSIFIED MALZEVILLE PLATEAU

This plateau's privileged location between town and countryside delights walkers, athletes and nature lovers alike. Listed as part of the Natura 2000 network and a Sensitive Natural Space (ENS), it enjoys enhanced protection which seeks to reconcile the preservation of animal (reptiles, butterflies, bats and more) and plant species (white violet, pasqueflower, etc.) with human activities (aeronautical, agricultural, sporting, educational and leisure). Its main ecological

wealth lies in its limestone grasslands, the largest in Lorraine (230 ha) – 45% of the plateau's total area. This area is maintained through agropastoral practices.

It is bordered by six communes, to the north of the Greater Nancy Metropolitan Area, and was a strategic military site from 1887 to 1998 with the presence of the 26th Infantry Regiment 'Iron Division'.

OTHER SENSITIVE NATURAL AREAS (ENS)

This departmental classification aims to ensure the conservation of exceptional areas, because of the quality of their landscapes or natural and semi-natural environments.

Open to the public, Sensitive Natural Areas also serve an educational purpose.

The six Sensitive Natural Areas of Greater Nancy:

- The frontier area of Art-sur-Meurthe
- The valley of Bosserville in Art-sur-Meurthe
- The islands of Fuller and Censer in Tomblaine
- The plateau of Malzéville in Dommartemont, Malzéville and Saint-Max
- The Butte Sainte-Geneviève in Essey-lès-Nancy
- The Fourasses Woods, extended by the dry grasslands in Villers-lès-Nancy

THE JARDIN EPHEMERE

Every October, Place Stanislas is transformed into a garden with a themed layout. (see page 50)

Nancy

➔ UNESCO world heritage ➔



La Belle Saison

The site, registered on the Unesco World Heritage List in 1983, is the pride of Nancy and wins admiration from visitors.

Much more than a simple backdrop, «Place Stan» is a place for everyone and a magnificent, lively spot. Nancy's 18th century architectural ensemble is comprised of 4 elements :

- **Place Stanislas**, without equal, restored and pedestrian-only since 2005. It was elected in 2021 "favorite monument in France".
- **Place d'Alliance**, lined with private homes with a magnificent central fountain.
- **Place de la Carrière**, an old, expansive square once used for equestrian activities.
- **The Arc Héré triumphal arch**, honouring the virtues of Louis XV, king of France and son-in-law of Stanislaw, the last Duke of Lorraine.

Each space has a distinctive atmosphere, with its own unique architecture, scale, usage and symbols.

Place Stanislas and Place de la Carrière hold events throughout the year :

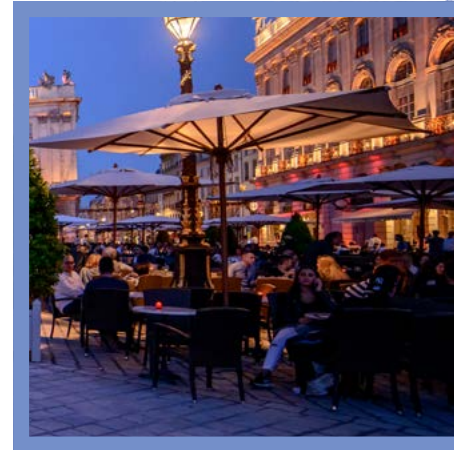
- **Place Stanislas:** "La Belle Saison", a mapping video on the monuments in the summer; the Jardin Éphémère in October; Saint Nicholas festivities from November to January. The Saint Nicholas parade ends on the square.
- **Place de la Carrière:** Livre sur la Place book fair in September; the 24h de Stan (crazy) student race; the kids' village during the Saint Nicholas festivities with rides and a big wheel.

PLACE STANISLAS

Nancy, the capital of the Dukes of Lorraine and a centre of executive and administrative power, is paradoxically the oldest and most typical example of a modern capital city where an informed monarch was shown to be concerned with serving the public.



Place Stanislas
©Régine Datin



The Arc Héré
©Régine Datin

A deposed king of Poland who became Duke of Lorraine through his son-in-law Louis XV, Stanislaw Leszczynski, alongside architect Emmanuel Héré, chose this site ideally located between Nancy's old (Ville Vieille) and new (Ville Neuve) towns. The square was built in record time for the era, between March 1752 and November 1755. Inaugurated on 25 November 1755, Place Stanislas has made Nancy famous the world over. On the south side, the main façade of the City Hall, adorned with Stanislaw Leszczynski's coat of arms and the blazon of the City of Nancy.

On the east side, the Grand Hôtel de la Reine (Alliot Pavilion) and the Nancy Lorraine Opera (Farms' Pavilion). On the west side, the Jacquet Pavilion and the Fine Arts Museum. On the north side, the buildings known as the "basses faces", because they had to be built no taller than the first floor of the other buildings, for military reasons among others. This contributes to the square's unique airiness. All around the square, Jean Lamour's gilded wrought-iron gates provide a harmonious continuity. Together with Guibal's Amphitrite and Neptune fountains they represent the French rococo style.

Place Stanislas is widely considered to be the finest royal square in Europe and one of the most beautiful squares in the world (ranking fourth according to Lonely Planet's website)! The centre of this royal square originally featured a bronze statue of Louis XV by sculptors Barthélémy Guibal and Paul-Louis Cyfflé. The statue was melted down after the French Revolution and in 1831 a new statue, representing Stanislaw Leszczynski, was erected.



La place d'Alliance
©Carole Marcantonio

PLACE D'ALLIANCE

A masterpiece of peace and refinement, it was built at the southeast corner of the royal square and owes its name to the alliance between the House of Habsburg-Lorraine and the House of France.

Former Saint-Stanislas square, this 90-metre square was built on the grounds of the ducal kitchen garden. Héré owned a house on the western part of the quadrilateral, it faced the Hôtel d'Alsace.

In its centre stands a remarkable fountain, created by Paul-Louis CYFFLÉ. This fountain symbolises the «new Alliance» of the Houses of France and Austria.

Three river gods (the Moselle, the Meurthe and the Meuse) pour their urns into a basin. They support on their shoulders a stone obelisk at the end of which stands a winged genie blowing a trumpet.



Place de la Carrière
©Vincent Damarin

PLACE DE LA CARRIÈRE

Place de la Carrière is the third site in the 18th-century architectural UNESCO world heritage ensemble. It was originally created in the 16th century as a venue for jousts and tournaments - hence its name (Carrière refers to the jousting field).

In the 18th century it was redesigned to lend an architectural harmony to the perspective of Place Stanislas. The architect modified all the façades of the houses, giving greater unity to the square's architectural composition. When Stanislaw arrived in Lorraine, the square had only one 18th-century town house - the building that now houses the Court of Appeal.

The rectangular open area was surrounded by a low wall decorated

with vases and allegorical figures and with fountains on all four corners.

At the far end of the square, Duke Leopold had started work in 1717 on a palace intended to replace the old Ducal Palace. However, Stanislas abandoned this idea and instead had what is now the Palais du Gouvernement built. Designed by architect Emmanuel Héré, it is set in a semicircle decorated with Greek and Roman divinities.



L'arc Héré
©Pierre Defontaine

THE ARC HÉRÉ TRIUMPHAL ARCH

Sitting on a pedestal, this Corinthian triumphal arch is inspired by the Arch of Septimius Severus in Rome. The Arc Héré stands on the site of the former royal gate built by Louis XV.

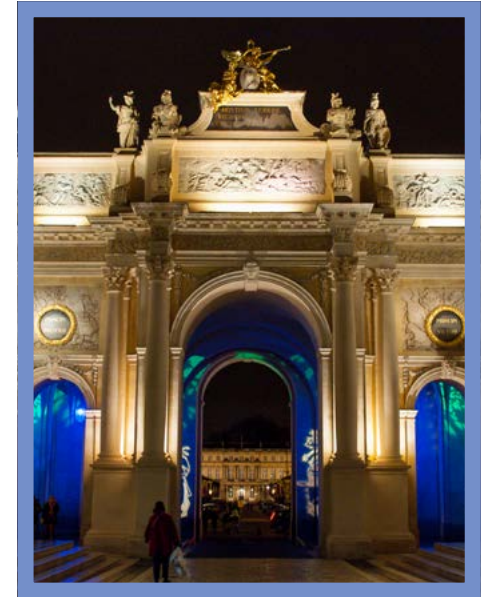
Originally connected to the ramparts by galleries, the summit of the arch was a part of the wall walk, to meet the demands of the military governor, Marshal Duc de Belle-Isle.

The side of the arch facing Place Stanislas is the more decorated of the two faces. The cornice depicts the theme of war and peace, featuring statues of Ceres, Minerva, Hercules and Mars.

In the centre of the cornice, an acroterion supports a group of three figures in gilded lead adorned with a medallion of Louis XV.

Behind the medallion is PHEME, the Roman goddess of glory (or fame and renown), holding a trumpet in her left hand and a laurel wreath in her right hand. All of the statues were made by Guibal.

The inscription *HOSTIUM TERROR / FOEDERUM CULTOR / GENTISQUE DECUS ET AMOR* means Terror of enemies, maker of treaties, glory and love of his people.





«La lecture»
par Henri Bergé (1870 - 1937)

ART NOUVEAU

THE "ÉCOLE DE NANCY"

Glass art, ceramics, furniture, ironwork, bookbinding, stained glass, sculpture and architecture: between 1894 and 1909, an entire generation of artists and industrialists in Nancy reinvented the decor and daily life of the city with audacity and brilliance, drawing inspiration from plants and science!

Art Nouveau experienced exceptional development in Nancy, as the capital of Lorraine played a major role in this artistic movement. At this time, the city owed its dynamism to a young, often wealthy and cultured population, exiled from Alsace and northern Lorraine - regions annexed by Germany in 1871 following the Treaty of Frankfurt.

Art formed an alliance with industry, while the minor arts (glassware, ceramics, ironwork, stained glass, woodworking, etc.) established a strong presence in everyday life. Eager to promote this art, Lorraine artists paid particular attention to furniture, goldsmithing and decorative objects. For these artists, nature served as a primary source of inspiration, appearing in all the techniques approached. As a result, we began to find houses with facades painted with smoothly flowing plant motifs..

Emile Gallé (1846-1904) played an important and pioneering role in this artistic movement. In 1877, he took over the management his father's business.

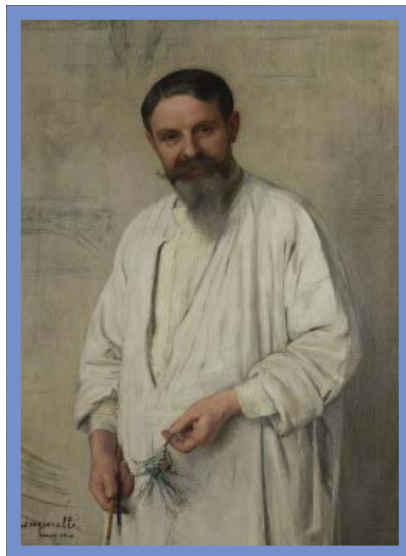
He then went on to create new forms and decorations inspired by plants and the Orient, whether in ceramics, glassware or woodworking, met with great success in Paris and during the 1889 World's Fair. A year later, the 1900 World's Fair would offer several Nancy creators the chance to highlight the importance of local artistic production.

Many artists followed in Gallé's example, while their success at the last World's Fair would motivate them to come together and ensure their cohesion. In 1901, Lorraine artists and industrialists decided to found an association - **the Provincial Alliance of Artistic Industries, or the "École de Nancy"**. This alliance promoted the collaboration of different disciplines, encouraging research and innovation, the training of a skilled workforce and an enlightened social policy, all under the motto of «Art for everything and art in everything», combining single or small-series production ('rich' series) and **its industrial adaptation at affordable costs.**

The International Exhibition of Eastern France, in 1909, would be the last great manifestation of the Nancy movement, which disappeared with the outbreak of the First World War (see page 44).



Émile Gallé



« Portrait of Louis Majorelle »
Jacques Majorelle (1886-1962)

A FEW PORTRAITS OF THE ÉCOLE DE NANCY

ÉMILE GALLÉ (1846-1904)

An artist, business owner, ceramist, glassmaker and cabinetmaker, his aesthetic sense and technical mastery established him as the leader and founder of the École de Nancy.

LOUIS MAJORELLE (1859-1926)

The co-founder of the École de Nancy was also one of its best-known artists. A bronze sculptor and master glassmaker, he is most well-known for creating prestigious pieces of furniture produced in series. By expanding his company's activities, he was able to open showrooms in Paris, Lyon and Oran, something that no other manufacturer had managed to do.

ANTONIN DAUM (1864-1930)

An accomplished master glassmaker, he helped establish new manufacturing methods while also developing pâte de verre, or glass paste. His aesthetic ensured the world-renowned reputation of the Daum company. As the founding vice-president of the École de Nancy, he played a vital role at the International Exhibition of the East of France in 1909.

VICTOR PROUVÉ (1856-1943)

He was the great coordinator of the movement. His eclectic nature opened him up to all areas of artistic expression: book binding, engraving, sculpture, jewellery, illustration, marquetry, etc.

JACQUES GRUBER (1870-1936)

A woodworker, glass painter, sculptor (and teacher), he was certainly one of the most gifted students of the École de Nancy. Playing on both transparency and opacity, he was the master of Art Nouveau stained glass.

EUGÈNE VALLIN (1859-1926)

A self-taught woodworker, he became a furniture designer to diversify his production. Gallé introduced him to the modern École de Nancy movement, and Vallin designed the door of Gallé's new workshops.

LUCIEN WEISSENBURGER (1860-1929)

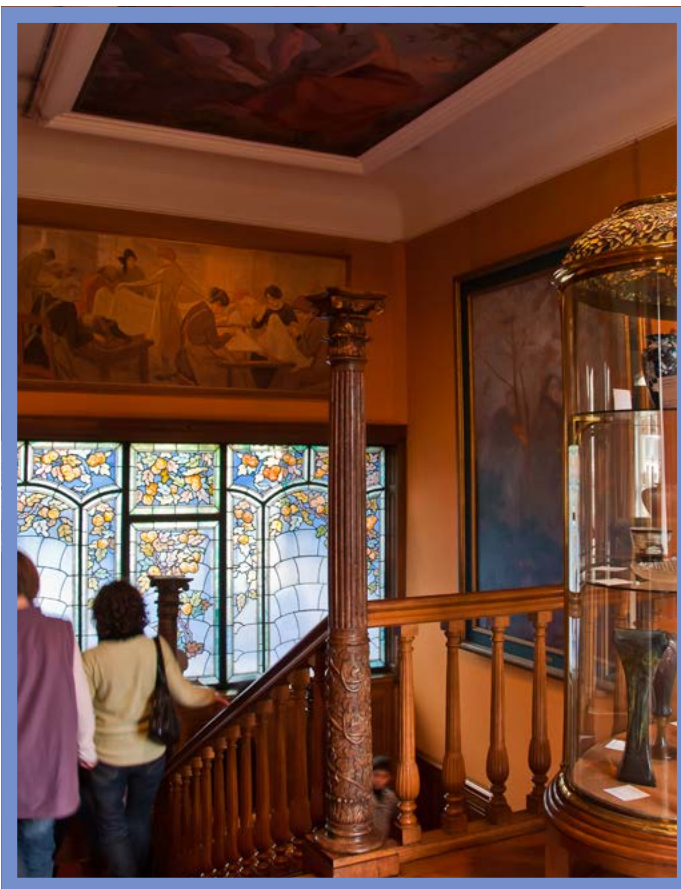
The Excelsior hotel and brasserie, the Magasins Réunis, the Villa Majorelle and Weissenburger's own private home: this Nancy architect contributed the most to the city's architectural renewal.

EUGÈNE CORBIN (1867-1952)

Industrialist, patron, collector and editor of the magazine Art and Industry (founded in 1909), his role was essential for the promotion of the Alliance. His former home is today the site of the École de Nancy Museum.



The École de Nancy Museum



KEY DATES OF ÉCOLE DE NANCY

1870-1871 Franco-Prussian War. Treaty of Frankfurt.

1878 Emile Gallé participates in the third Universal Exhibition in Paris.

1884 Emile Gallé wins two gold medals at the Clay and Glass Exhibition in Paris.

1889 Emile Gallé and Louis Majorelle participate in the fourth Universal Exhibition in Paris. Gallé wins the Grand Prix for his glassware, a gold medal for his ceramics and a silver medal for his furniture.

1894 Decorative art exhibition in Nancy. The organising committee acquires a few pieces to start a museum.

1900 DAUM, GALLÉ, MAJORELLE and other Nancy artists participate in the fifth Universal Exhibition in Paris.

1901 The "École de Nancy", the Provincial Alliance of the Industries of Art is founded. Construction of the Villa Majorelle by the Parisian architect Henri SAUVAGE.

1903 Exhibition of the École de Nancy at the Pavillon de Marsan in Paris.

1904 Death of Gallé. Decorative art exhibition "École de Nancy" at Galleries Poirel.

1909 International Exhibition of the East of France at Sainte-Marie Park in Nancy (last exhibition of the École de Nancy in a special pavilion built by Eugène VALLIN).

1914-1918 World War I.

1931 GALLÉ's workshops close.

1956 MAJORELLE's workshops close.

1961 VALLIN's workshops close.

1964 Opening of the École de Nancy Museum in Corbin's house.

ART NOUVEAU AND BOTANY

Emile Gallé, a trained botanist and the soul of the movement, found his greatest sources of inspiration in nature, in particular in the flora of Lorraine. Architecture, furniture, glass art: nature is everywhere. «My roots are in the depths of the woods» was carved by Majorelle in the doors to the Gallé Workshops (today in the garden of the École de Nancy Museum).

THE ART NOUVEAU MUSEUM CELEBRATES 60 YEARS

Housed in the home of the patron Eugène Corbin, this reconstitution of an Art nouveau interior is the only museum of its kind in the world. It belongs to the city of Nancy. A priceless collection of glassware by Emile Gallé is on display on the main floor. The garden is accessible free of charge and cultivates local species and plants from famous breeders affiliated with the École de Nancy. This vegetation provided an inexhaustible source of inspiration for the artists and industrialists of Nancy's Art nouveau movement. In the garden, don't miss the Aquarium pavilion, the doors of Gallé's workshops and one of the first funerary monuments of this movement.

Open Wednesday to Sunday from 10:00 to 18:00.
36-38 Rue du Sergent Blandan in Nancy (opposite Nancy Thermal)

<https://musee-ecole-de-nancy.nancy.fr>



The Villa Majorelle

THE VILLA MAJORELLE

The fruit of a collaboration of Henri Sauvage, influenced by Hector Guimard and Lucien Weissenburger, this beautiful three-storey house, built for Louis Majorelle and his family, features several semi-circle windows and floral patterns covering the exterior. Louis Majorelle himself created the ironwork as well as the interior furnishings, wood panelling and the staircase. He chose to set up his studio on the third floor of the villa under the gable roof, with a sumptuous arched bay window featuring shapes evoking the branches of a tree. The house is called Villa JIKA (for Jane Kretz, Louis Majorelle's wife).

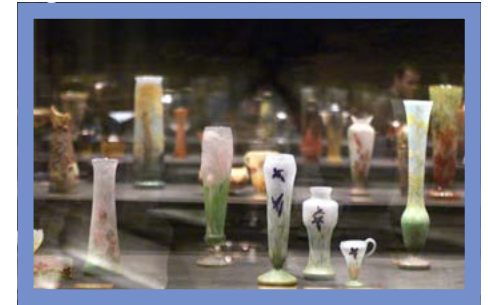
Managed by the city, it is opened to individual visitors on Wednesday to Sunday afternoons from 14:00 to 18:00. Rue Louis Majorelle in Nancy. Prior reservation required.

<https://musee-ecole-de-nancy.nancy.fr>





The Daum collection at the Fine Arts Museum



AT THE FINE ARTS MUSEUM

THE DAUM COLLECTION

The Daum collection of Nancy's Fine Arts Museum is a rich selection of more than 950 pieces, including 300 on display, unrivalled by any museum in France or abroad. The collection is significant in terms of both aesthetics and history, showcasing the past productions of the glassworks, from its beginnings in the 1880s all the way to the creations of the 1990s. A beautiful journey through time! The display in the basement of the Fine Arts Museum is simply breathtaking!

Open Wednesday to Monday, from 10:00 to 18:00. Place Stanislas.

<https://musee-des-beaux-arts.nancy.fr/>

NANCY AND THE DAUM GLASSWORKS

The Daum Family are part of the «optants» that arrived from Alsace-Moselle when the territories were annexed by Prussia in 1871. After a few difficult years, the artistic department of the company was created in 1892, marking the rise of one of the most creative and prestigious crystal works in the world. Daum's factories are still located in Nancy and in Vannes-le- Châtel and the company continues to dazzle today. A boutique on Place Stanislas displays the work of these masters of the glass arts.

THE ARTISTS OF THE ÉCOLE DE NANCY

Their works presented in the collections of the Fine Arts Museum bring to light the movement of the École de Nancy, known for decorative arts and architecture. The works include the paintings of Victor Prouvé, L'île Heureuse, La Joie De Vivre and Les Voluptueux, as well as the works of Camille Martin and the regional painter and naturalist Emile Friant. Also discover the Cartier-Bresson Collection illustrating Japonism, a movement that partly inspired the École de Nancy.



ARCHITECTURAL HERITAGE

Designs and structures can be seen throughout the different districts of the city.



Seed shop in rue Saint Jean

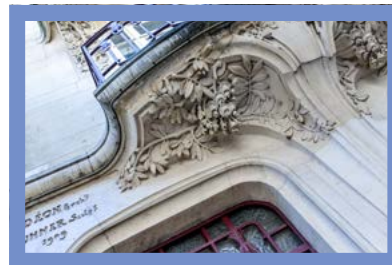


Foch avenue

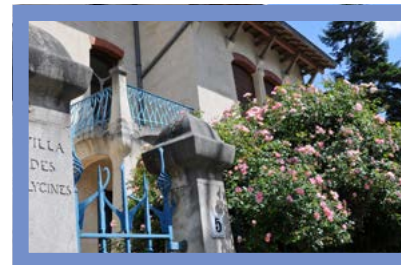
• Around 1900, the area between the train station and Place Stanislas was the heart of the economy, with shops, banks, newspapers, hotels and brasseries. The École de Nancy took advantage of technological advances to illustrate

the business spirit of the bourgeoisie of the time.

- Saurupt Park in the southwest of the city was created in 1901. Jules Villard's project was to build a garden town «between the city and the countryside». Only six villas were finished out of the 100 originally planned. The project was taken up again after World War I with the construction of more modest villas. This district of Nancy is an excellent illustration of the architectural differences between Art nouveau and Art Deco.
- Around Sainte-Marie Park and the École de Nancy Museum, the city yields to nature in the quiet streets lined with family homes featuring colourful flowers and plant motifs.
- From the train station to the Villa Majorelle, the most famous Art nouveau home, the prestigious apartment buildings and private villas testify to Nancy's spectacular population growth with the arrival of those opting to leave Alsace-Moselle (from 40,000 to 110,00 inhabitants in just a few years).



Anatole France avenue (detail)



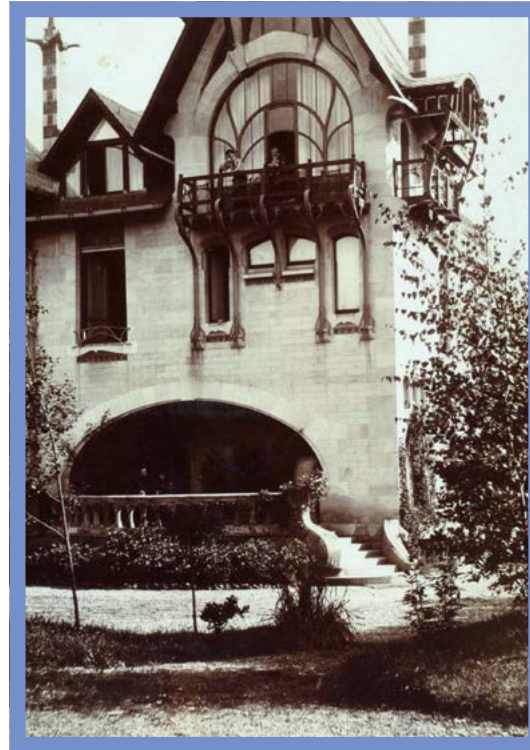
Saurupt Park

Other outstanding buildings fill the entire city: industrial buildings, prestigious apartment buildings and private homes - some of which line the railway tracks in order to «be seen».

SPOTLIGHT ON THE VILLA MAJORELLE

BANISHING ACADEMIC SYMETRY

Louis Majorelle wanted his house to reflect the spirit of his work: modern, dynamic and simple without being ostentatious. The reasonably-sized house was above all designed for its occupants and their day-to-day comfort. Henri Sauvage thought about living spaces before elevation and about the interior layout before academic ideals. The exterior plays on repeated oppositions: the austere bareness of the Euville stone contrasts with the colours of the brick, ceramics, woodwork and ironwork; the vertical stairwell tower contrasts with the elliptical arch of the terrace; the medieval-inspired flying buttress (no longer visible) contrasts with the Japanese style of the woodwork of the balcony. Inside, the spaces for service, reception and day-to-day life are fluidly and logically arranged. The decoration is accentuated by a prevalence of wood that serves as a common thread in the interior layout as well as a link with the exterior.



The Villa Majorelle in 1902



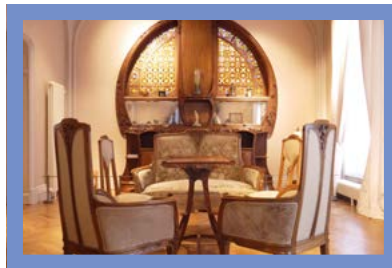
Jika and Louis Majorelle

WIDE-RANGING TALENTS SERVING THE DECOR

Sauvage designed the fixed decorations such as the ironwork, and called on other artists for specific tasks, including his Parisian friends. The ceramist Alexandre Bigot made the exterior and interior flambé stoneware and the painter Francis Jourdain created the decorative paintings in the dining room. Unsurprisingly, Louis Majorelle designed the furniture, including several items from his company's catalogue. He entrusted Jacques Gruber, a master glassmaker from Nancy, with designing the stained-glass windows of the main areas (stairwell, dining room living room, and the Majorelles' bedroom). The concrete structural works were carried out by the company France-Lanord & Bichaton. The finished house includes some oversights, such as the north-facing terrace, the reusing of materials and choices made to save money, but overall, the Villa Majorelle stands as a unique experimental work. «I worked on it for two years, redrafting my design over a hundred times... so that this first client, this beautiful artist, could receive ... the expression of my deepest gratitude for the unexpected freedom that he gave me - without imposing, despite my young age, any budget limitations or his personal ideas,» Henri Sauvage would later say.



The Villa Majorelle



REFURBISHING THE VILLA

Nearly 100 items of furniture, paintings and objets d'art from the collections of the Nancy School Museum are on display in the villa. Since 1983, the École de Nancy Museum has been acquiring works from the villa and identical pieces that have now been used to reconfigure the rooms, alongside a selection of contemporary objects from the museum's collections. The furniture from the Villa Majorelle is mostly original, but efforts were also made to find pieces identical to those that were initially present in the villa.

Old photographs of the Villa Majorelle from family photo albums showed many decorative objects alongside the furnishings. The École de Nancy artists were very interested in objets d'art and there was a significant production of bibelots. With this in mind, the École de Nancy Museum searched its collections for works of glass, stoneware and faïence that could be displayed in the villa. Similarly, the museum chose paintings from its collections created by Louis Majorelle or his son Jacques, as some of them were present in the villa according to family memories and photos.



Basilica of Saint-Epvre
from the «Grande Rue»

THE OLD TOWN (VILLE-VIEILLE)

The Duchy of Lorraine and its capital really began to thrive after the victory of René II on January 5, 1477 over the powerful Duke of Burgundy, Charles the Bold, fought outside the ramparts of Nancy. The city is centred around the Ducal Palace.

Between 1560 and 1590, Charles III increased the area of the city five-fold when he established the new town, Ville-Neuve, in the south of the city, rising up from the countryside. Before the attachment

of the Duchy of Lorraine to France (1766), the last Duke of Lorraine, Stanislaw, combined the two towns (old and new) with an extraordinary royal square, today known as Place Stanislas (1755).

THE DUCAL PALACE AND THE VILLE-VIEILLE

When René II was finally the ruler of the lands liberated from Charles the Bold in 1477, he found the castle of his ancestors in ruins. In 1502 he built a new residence next to the Saint-Georges Collegiate Church. The palace was designed by Jacques de Vaucouleurs, who remained at the head of the construction until 1522.

Work continued under the reign of René's son Antoine, but it was under Charles III that the palace was completed.

The old town, the Ville Vieille, with its narrow streets, atmosphere and cafes, is one of the most pleasant districts in Nancy.

THE DUCAL PALACE - MUSEUM OF LORRAINE

The 15th-century Ducal Palace was originally the residence of the Dukes of Lorraine. It was abandoned by Duke Leopold in the 18th century who chose instead to reside at Lunéville Château. After several periods of trying transformations, the palace became the Museum of Lorraine in 1848. The remarkably decorated gatehouse, inspired by Blois Château, is an elegant combination of Gothic and Italian Renaissance styles.



The gatehouse of the Ducal Palace (detail)



The Ducal Palace

Duke Antoine married Renée, the daughter of the constable of Bourbon. He visited Blois Château in his youth, whose monumental gate inspired the gatehouse of Nancy's Ducal Palace. The sculptor Jacquemin de Lenoncourt worked on the gatehouse from 1511 to 1512. It

includes the equestrian statue of Duke Antoine (by Mansuy Gauvain), carved in a niche surrounded by a segmental arch.

The style is typical of the early Renaissance, also known as «Gothic transition», combining Italian decors with structures still marked by the Middle Ages. The style is seen here in the shape of the balcony balustrades and in the gargoyles, as well in the interior courtyard with its sharp-pointed arches and flying buttresses with Gothic pinnacles. Typical Renaissance elements include the mullioned windows, the figurative medallions in the courtyard, the twisted moulding running along the street-facing façade and the illustrated corbels of the balconies (heavily restored).

During the construction to expand the Museum of Lorraine, Cordeliers Church (as well as its adjoining chapel) remain open with free entry.

CORDELIERS CHURCH

Cordeliers Church owes its name to the Franciscans, who wear corded rope belts around their waists. The church was built in the 15th century under the orders of René II to celebrate his victory in the Battle of Nancy.



The chapel of the Dukes of Lorraine

The final resting place of the Dukes of Lorraine, the church is still home to several remarkable tombs, despite the torments of history.

The extraordinary ducal chapel takes its inspiration from Medici Chapel in Florence.

Cordeliers Church was once connected to the Ducal Palace by a covered passageway. The church was built after René II vowed to construct a sanctuary if he defeated Charles the Bold. This place of worship was consecrated in 1487.

It features a 73-metre-long nave and lateral funerary chapels that were added after the initial construction.

A Renaissance-inspired polychrome tomb niche dedicated to Duke René II hangs on the south wall.

The recumbent of his wife, Philippa of Guelders, masterpiece of the famous Lorraine sculptor Ligier Richier, is also presented in this church.

Numerous exceptional paintings adorn the walls of the church, including the Virgin with Rosary by Jean de Wayembourg and two compositions by Rémond Constant. The talented 17th century engraver Jacques Callot is interred in the church with his father and his grandfather (funeral monument at the entrance to the cloister).

The rose window in the west above the door was adapted in the classical style. It features modern stained glass depicting the coat of arms of Lorraine.

To accompany its renovation and the closure of the permanent collections, the Lorraine Museum - Palace of the Dukes of Lorraine presents a display illustrating the history of the Dukes of Lorraine and Bar in the Les Cordeliers Church.

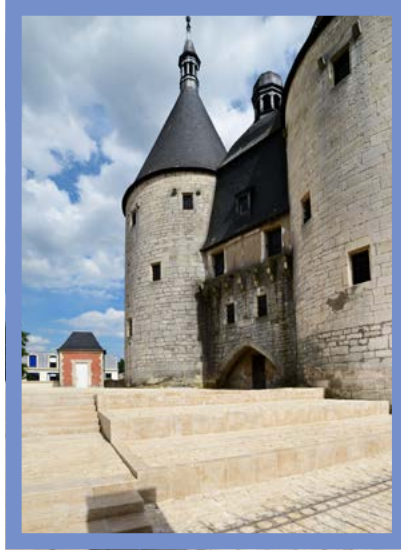
Free access Tuesday to Sunday from 10:00 to 12:30 and from 14:00 to 18:00.

www.musee-lorraine.nancy.fr



PORTE DE LA CRAFFE GATE

This 14th-century gate is the oldest element of Nancy's fortifications. It was later used as a prison for many years.



Porte de la Craffe gate

This fortified entrance to Nancy was originally known as the Porte des Bordes (referring to the shacks housing the contagious ill people rejected by Nancy). The monumental Porte de la Craffe gate is a testament to the quality of the protective city walls at the end of the 14th century. Its twin turrets, built in 1463, boast three-metre-thick walls.

They valiantly resisted the sieges on the city in 1476 and 1477 by Charles the Bold. The windows were arranged to enable shooting in all directions. Stone corbels once supported shutters to protect the defenders posted at these openings.

The central domed tower was built at the beginning of the 16th century. It housed a bell taken from Saint-Epvre Church that marked the hours, the curfew, executions and labours.

Under the reign of René II, in the early 16th century, a large terreplein was added behind the Porte de la Craffe gate in the direction of the former village of Saint-Dizier. All but three of the village's houses were torn down for strategic reasons. The terreplein was meant to strengthen the defences of the Porte de la Craffe gate against effective new types of artillery. A new gate, the Porte Notre Dame, was built across the terreplein. It was connected to the Porte de la Craffe by a vaulted tunnel. The Craffe gate featured a series of sculptures of the Annunciation (now kept at the Museum of Lorraine), because René II attributed his victory over Charles the Bold to the protection of the Virgin of the Annunciation (her effigy graced his battle flag).

PORTE DE LA CITADELLE GATE

Duke Charles III built this gate in the 17th century to double up and strengthen the city's defences.



Porte de la Citadelle Gate

It was originally surrounded by four bastions and separated from the Porte de la Craffe by ditches which have since been filled in. The connecting bridges are no longer visible, and in 19th century the doors of the gates were removed.

Charles III wanted to strengthen the defences of the Porte de la Craffe. He entrusted Orféo Galeani (who had previously worked in Milan) with building two bastions: «the Duke» (in honour of Duke Charles III) and «the Marquis» (in honour of his son, Marquis de Pont, the

future Henri II). The bastions sat on either side (east and west) of the terreplein built under René II. Around 1598, Florent Drouin le Jeune built a Renaissance style gate between the two bastions. Two statues remain today depicting the virtues of the Duke (perhaps Justice and Temperance). These statues once surrounded the ducal arms and the coat of arms of the town governor, Count John of Salm. The broken pediment is decorated with trophies of weapons. It was also adorned with a Virgin and Child, which gave the gate its former name of Porte Notre Dame. The statue was destroyed in 1792.

HÔTEL FERRARIS



Hôtel Ferraris

Behind the classical façade of this beautiful 18th-century private mansion is a sumptuous staircase with a railing by Jean Lamour. The painted sky ceiling is by Barilli, a student of the great Bibiena.

The courtyard is typical of large private homes of the time and features a fountain of Neptune.

The Ferraris family wanted to honour their Italian origins by marking the home with their coat of arms that includes the Florentine lily.

This flower is also present on the balcony of the façade, under the porch and on the staircase of honour, both on its corbels and along its railing, alternating with the monogram of the Ferraris-Fontette family.

The sumptuous home was most certainly designed by Germain Boffrand, who had arrived in Lorraine in 1711 to build the new «Louvre» of the Ducal Palace for Duke Leopold, as well as to monitor construction at Lunéville Château. He also designed city and countryside homes for the great lords of the Court (including the Prince Beauvau-Craon).

HÔTEL DES LOUPS

This 18th-century private home gave its name to its street, the Rue des Loups (Wolves Street). Designed by Germain Boffrand, a monumental gate topped with two stone wolves protects the property, a nod to the owner's role of Wolfcatcher of the Dukes of Lorraine.



Hôtel des Loups
© Régine Datin

HÔTEL D'HAUSSONVILLE

Rue Monseigneur Trouillet, named after the priest who built the Saint-Epvre Basilica, is lined with beautiful private mansions, including the Hotel d'Haussonville. Its courtyard façade features a beautiful trompe-l'œil door and balustrades from different periods: one is flamboyant Gothic and the other Renaissance.

Built between 1528 and 1543, this imposing home is brimming with the Renaissance style. The house was commissioned by the Seneschal of Lorraine, Jean d'Haussonville, who died before it was finished.

His son Balthazar, the Governor of Nancy and Grand Master of the Hotel of the Duke, was the first to live in the house.

This mansion is now a 4-star hotel.



Hôtel d'Haussonville
© Régine Datin

SAINT-EPVRE BASILICA AND SQUARE

The old market square was the centre of commerce in the Middle Ages. In the middle of the square stands a statue of René II, the Duke of Lorraine, who defeated Charles the Bold, the Duke of Burgundy, at the Battle of Nancy in 1477.

Saint-Epvre Basilica, built in the 19th century by Prosper Morey, features stained-glass windows and wood panelling that were partly created in Bavaria. The basilica benefited from the generosity of Napoleon III, Emperor Franz Joseph, Louis II of Bavaria and Pope Pius, who donated the choir paving stones that came from the Appian Way.

This original parish of the Ville Vieille was dedicated to Saint-Epvre, the bishop of Toul and a zealous evangelizer. The first church of the parish inside Nancy's city walls was built in the 13th century. A succession of several different buildings stood on the edge of the market square overlooked by the church tower. This belfry served as a watchtower and a meeting place for the town council. It also housed the municipal archives.

Built between 1436 and 1451, the old Gothic church was strategically oriented. It was torn down in 1863 to make way for an ogival style basilica with its choir turned toward the south.

Viennese artisans created much of the woodwork, furniture and stained glass windows, as well as a spectacular nativity scene, since the family of Lorraine ruled Austria at the time.

Saint-Epvre Church was granted the title of minor basilica in 1874 by papal decree.

*Saint-Epvre basilica
and the statue of René II*



Saint-Epvre Square

The basilica's 87 m tall tower rises above the green copper roof; overlooking the Ville Vieille and sheltering families of kestrel falcons.

In the centre of the square, among the cobblestone fans, stands the statue of René II by Mathias Schiff. It was created for the jubilee of Abbot Trouillet.



THE BEST OF GREATER NANCY



Bosserville Charterhouse

BOSSERVILLE CHARTERHOUSE IN ART-SUR-MEURTHE

The 17th-century Bosserville Charterhouse is a jewel designed by the Italian architect Giovanni Betto (the first architect of Nancy's cathedral). The building includes a 110-metre long cloister and a chapel inaugurated in 1687 featuring painted murals. In 1632, Charles IV, the Duke of Lorraine provided the Carthusians of

Moselle with a plot of land in Bosserville where the charterhouse was founded in 1666. Today, the site is home to a vocational high school and can only be visited during the annual Heritage Days.

Adress : Rue du Bois Robin,
54510 Art-sur-Meurthe

FLEVILLE CHÂTEAU IN FLEVILLE-DEVANT-NANCY

On the southern outskirts of Nancy, Fléville château is a unique example of medieval and Renaissance architecture in Lorraine. On arrival, visitors to Fléville can admire the 30-metre tall medieval donjon and the beautiful Renaissance façade, often compared to that of Azay-le-Rideau.

Behind this elegant façade numerous treasures await to be discovered, including Renaissance woodwork, a collection of 18th-century tapestries, the

prestigious heraldic room of the Dukes of Lorraine, the royal apartments dedicated to Stanislaw Leszczynski, king of Poland and Duke of Lorraine, and a series of small private bedrooms.

This fine building is also a family home, lived in by the same family for more than two centuries, which accounts for the warm and convivial atmosphere.

The park, with its 18th-century orangery featuring a wonderful 17th-century

trompe l'œil, recently restored, has been awarded France's Remarkable Garden tourism label. Plus, it's a great place to bring the kids - there's an opportunity to dress up as knights or princesses and a book of activities is available to make their visit both fun and educational

Adress: 5 Rue du Château,
54710 Fléville-devant-Nancy

Website: www.chateaufleville.com



Fléville château



THE COMPANY TOWNS OF LA MADELEINE AND THE JUNCTION CANAL IN LANEUVEVILLE-DEVANT-NANCY

Designed by architect Emile André, the company towns of La Madeleine are a remarkable example of workers' housing estates from the first half of the 20th century. The junction canal links with the Marne-Rhine Canal in Laneuville. Biking trails on the towpath lead south to Fléville and north to Jarville, Nancy's marina (Port Saint-Georges). Montaigu Château and most of its surrounding park are within the town limits.

Locks of Laneuville-devant-Nancy

LES QUARTIERS ART DÉCO DE LAXOU

THE ZOLA - SAINTE-ANNE DISTRICT

The neighbourhood of Zola-Sainte-Anne was first built between 1920 and 1940, with further construction after 1950. It is the natural western extension of the city of Nancy. The district's includes Art Nouveau inspired architectural heritage and a few remarkable Art Deco buildings.

AVENUE CURIE

This street in the suburbs of Nancy is lined with middle-class row houses built in the 1930s. Most of the houses were designed by the Nancy architect Fernand Mascret, who made sure that

no two homes were alike, despite a limited budget. At the time, Nancy was in full expansion. The buildings are not overtly interesting, but architecture buffs will recognize the Art Deco designs of the homes.

BOULEVARD MARECHAL FOCH

Lined predominately with buildings designed by the same architect as Avenue Curie, no two buildings are the same along Boulevard Marechal Foch. Fernand Mascret took care to add variety to each of the buildings and break the monotony.

It's rare that an entire street be entrusted to the same architect.

CITY HALL

Laxou's city hall is a large former home commissioned by Saint-Just and Marthe Péquard of Nancy, who were rich merchants as well as collectors and archaeologists.

Built from 1912 to 1913, it was transformed in 1924 by Fernand Caesar. The town hall is surrounded by a landscaped park that reopened in 2013 after a complete overhaul.



Laxou's city hall



Madame de Graffigny's
château

MADAME DE GRAFFIGNY'S CHÂTEAU IN VILLERS-LÈS-NANCY

In the historic centre of the village, high walls surround the garden of this fine 18th-century mansion, refurbished in 1865.

Now the property of the municipality of Villers, it is used as a venue for receptions and exhibitions (the beautiful École de Nancy fireplace inside is listed). The garden features two cedars of Lebanon, planted by Mathieu de Dombasle in the 19th century. The grape harvest festival takes place here every year in early September. The château is named after its most famous owner, writer Françoise de Graffigny, née d'Happoncourt, who corresponded extensively with Voltaire and Diderot.

Adress: Rue Albert 1^{er},
54600 Villers-lès-Nancy

LA DOUËRA IN MALZÉVILLE

The late 19th-century building of La Douëra - meaning «little house» in Arabic - is a little Arabian palace open to visitors with prior



La Douëra

booking only. In 1856, the painter Charles Courmault decided to transform his family home into a Moorish villa after several trips to Algeria. The villa remained in the family until 1986, when it became the property of the city.

It was restored from 1989 to 1995. The façades and roofs, several rooms as well as a part of the garden were registered on the historical monument inventory in 1993. This remarkable building features a tiered minaret, an Arabo-Andalusian inspired portico, a Byzantine-inspired gate and corner benches reminiscent of North African mosques.

Adress: 6 Rue du Lion d'Or,
54220 Malzéville

SCIENTIFIC HERITAGE

Discover the evolution of techniques and know-how throughout history, find out more about the close ties that unite man and his environment or simply marvel at the wealth of biodiversity ... To allow everyone to better understand and grasp the world in which we live, the Metropolitan Area is committed to the promotion and dissemination of scientific and technical culture.

LE FÉRU DES SCIENCES

This scientific and cultural establishment co-managed by the Métropole du Grand Nancy and the University of Lorraine, invites families to discover physics and chemistry through various experiments. It presents an exhibition tour all about iron and its impact in Lorraine. Housed in the former History of Iron Museum, this building has seen various evolutions.

A museum and a space for sharing, creation and experimentation, all at the same time: Le Féru des Sciences offers exhibitions, activities and events throughout the year. Whether in the science section, with the Espace à Bidouilles experimentation and Pop Sciences Space, the iron exhibition with the Iron Gallery, the Machine Room and the Forges Garden - or for shared projects in the Hanging Oasis - this tour offers an ideal moment of discovery and sharing for families.

Le Féru des Sciences also organises events for all audiences every year, such as the Makerland Weekend or themed days like the Robots event.

*Open Wednesday to Sunday from 09:00 to 12:00
and from 14:00 to 18:00.*

*1 Avenue du Général de Gaulle,
54140 Jarville-la-Malgrange*

Tel: 03 83 15 27 70

<https://www.leferudessciences.eu>



Pop Sciences
©Lucie Petitjean



THE CHATEAU DE MONTAIGU

The Château de Montaigu, located in the town of Laneuville-devant-Nancy and adjoining the Féru des Sciences has been labelled as a Famous Persons' House by the Ministry of Culture.

Its last owner, Édouard Salin, an industrialist, archaeologist and collector, built up an exceptional collection of furniture, sculptures, paintings and musical instruments in the castle from the 20th century onwards.

Built in the 18th century, it houses cabinets of curiosities and rare objects. It is one of the few houses in Lorraine furnished and richly decorated in the Art-Deco style. It is a listed Historical Monument, as is the chapel and a number of works of art, some of which are in the park.

Open to the public for guided tours every weekend from May to mid-October.

167 Rue Lucien Galtier,
54410 Laneuville-Devant-Nancy
<https://www.chateaudemontaigu.eu/accueil>

The Château de Montaigu
© Régine Datin

THE NANCY MUSEUM AND AQUARIUM

Housed in an Art Deco building, recognised as 'Remarkable Contemporary Architecture', the Nancy Museum and Aquarium, co-managed by the Greater Nancy Metropolitan Area and the University of Lorraine, exhibits, preserves and studies a rich heritage of zoological and paleontological collections.

Gradually collected since the end of the 18th century, its zoological collections hail from all continents and oceans. With an original layout, the zoology gallery offers a selection of 570 specimens illustrating the animal kingdom. Over 136,000 other specimens, including extinct or protected species, are preserved and studied in the reserves and regularly presented in temporary exhibitions. The 57 aquarium tanks allow visitors to admire over 300 species, evolving in their reconstituted

natural environments, immersing the visitor in the tropical waters of the Red Sea, the Amazon River or Lake Victoria.

A dynamic institution that isn't afraid to broach societal issues, the Museum and Aquarium offers an evolving and varied cultural offering for young and old: temporary exhibitions, scientific conferences, events and unusual evenings.

Open Tuesday to Sunday from 09:00 to 12:00 and from 14:00 to 18:00.

34 Rue Sainte-Catherine, 54000 Nancy

Tel: 03 83 32 99 97

<https://www.museumaquariumdenancy.eu/accueil>



The Nancy museum and aquarium © Régine Datin



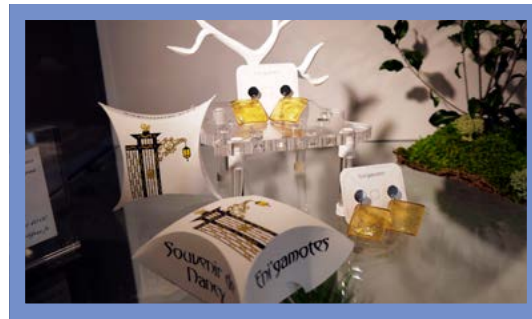
The Nancy museum and aquarium © Régine Datin

➡ Putting know-how & innovation in the spotlight ⬅

ARTISTIC TRADES DESTINATION

Today, DESTINATION NANCY places the artistic trades at the heart of its development strategy, at several levels of society. Each year, **the Home, Deco, Art and Antiques Fair** is held at the Parc Expo as part of DESTINATION NANCY's self-produced events. **With more than 200 exhibitors, it is the unmissable event for lovers of interior design and know-how, helping to promote local creators.**

The 2024 edition hold from 15 to 19 February 2024. DESTINATION NANCY was present with its own stand, alongside the Greater Nancy Metropolitan Area, promoting its support for the artistic trades.



DESTINATION NANCY follows a metropolitan strategy in support of the artistic trades, particularly through its tourist office, which is firmly committed to promoting this sector through various actions:

- A dedicated space: the **Arty Shop**
- The hosting of exhibitions and demonstrations
- The organisation of themed tours with craftspersons or highlighting artisanal heritage
- Commissioning work from craftspersons



The Arty shop space at the Tourist Office

THE ARTY SHOP

The Tourist Office aims to be a showcase for creators and craftsmen of the Metropole of Greater Nancy. A dedicated space has just been set up: **the Arty Shop**. It allows to:

- Give visibility to creators who are not always well known;
- Promote this theme which is part of the destination's DNA;
- To offer visitors but also to the inhabitants of the area, creations that are accessible to all budgets;

The Tourist Office is the 1st Tourist Office in France whose shop has been awarded with the label «Métiers d'Art» by the Grand Est Métiers d'Art !

Dedicated video: <https://bit.ly/metiersdartsnancy>

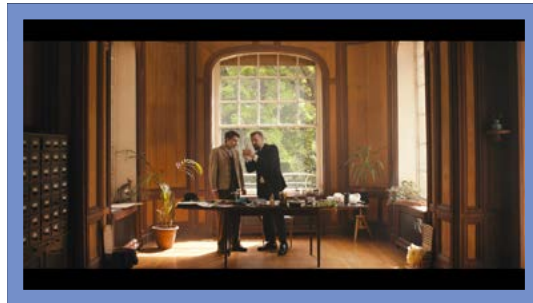
INNOVATIONS

DESTINATION NANCY offers innovative tools to discover our heritage thanks to new technologies and the creativity of local companies.

IMMERSIVE ART-NOUVEAU ROUTE

For those looking to learn more about the École de Nancy movement, the **immersive route** created by the Monolithe studio offers an innovative way to slip behind the scenes of the birth of Art Nouveau from your computer or smartphone. The site presents seven scripted videos, plunging you into the year 1901, in the footsteps of Henri Schweitzer who - over the course of the videos - evokes the effervescence of Nancy and the birth of the École de Nancy artistic movement at the beginning of the 20th century.

<http://immersion-nancyartnouveau.com>



Discover the immersive route



Discover the 1909 International Exhibition of Eastern France

1909 INTERNATIONAL EXHIBITION

A **3D reconstruction film** allowing viewers to discover the 1909 International Exhibition of Eastern France, now vanished from memory. The opportunity to look back on an important and exceptional event in the history of the École de Nancy that allowed the great figures of this movement to come together and exhibit their works in the city for six months. This exhibition would also be significant as the first time Lanternier exhibited his discovery of thermal waters in the city which, in the spring of 2023, will finally welcome (or welcomed) the Nancy Thermal complex.



This film can be found on the DESTINATION NANCY YouTube channel:

<https://bit.ly/exponancy1909>

↔ Gourmet ↔

Nancy



Rum baba



NANCY PASSIONS SUCRÉES

Macarons, bergamot sweets, candied Mirabelle plums, madeleines, Saint- Epvre cakes, visitandines, gingerbread, rum babas, red sugar, jam, sweets, chocolates and more.

The NANCY PASSIONS SUCRÉES brand guarantees unique, handcrafted products,

made locally according to traditional recipes, using ingredients of excellent quality and certified origin. Don't leave Nancy without having tasted one (or more!) of our sweet specialities.

NANCY BOASTS MORE THAN 20 DIFFERENT SWEET SPECIALTIES

DESTINATION NANCY-Tourist Office, Greater Nancy, the Chamber of Commerce of Greater Nancy and the Chamber of Trades and Crafts 54 joined together to create the brand NANCY PASSIONS SUCREES.

Today, this label has been awarded to nine professionals, for over 20 specialities.

The list and addresses are on our website nancy-tourisme.fr



Bergamotes de Nancy
©Régine Datin



Macarons des Sœurs
©Régine Datin

WHY ARE THERE SO MANY SWEET SPECIALTIES IN THE DUCAL CITY ?

In the 17th century, Good King Stanislaw was no stranger to sweet treats, including traditions brought from Italy during the Renaissance and those of Lorraine's many convents and monasteries! Stanislaw, the last duke of Lorraine and a former King of Poland, bequeathed several specialties to the region, including the baba made with Tokaji Hungarian wine (replaced by rum in the 19th century) and madeleines.

During the Revolution, the Visitation Sisters popularised the Macaron de Nancy: the original recipe of the Soeurs Macarons is still a closely guarded secret. In the early 19th century, a pastry chef from Nancy created candies made with bergamot oil. The Bergamote de Nancy was awarded PGI status in 1996.

Saint-Epvre cake was born at the end of the 19th century, at the same time as the basilica it was named after.

In the 20th century, inventive candy makers created Duchesses, Marquises, Florentines, Craquelines and Perles de Lorraine, all of which are today patented products.

The Saint Nicholas festivities are accompanied by delicious gingerbread that fills the streets with its scent in December.

And you can't forget the mirabelle plum, used in thousands of sweet ways: jams, syrups, liqueurs, eau de vie, cakes, as well as in local restaurants where mirabelle plums are featured in many desserts.

All of this alongside new sweet treats born from the inventiveness of our local talent!

Visit our website for more information.

NANCY PASSIONS SUCRÉES SPECIALITIES

Alain Batt Chocolats

Marquises and Bergamotes de Nancy IGP.

Boulangerie-Pâtisserie Gwizdak

Visitandines and Gâteau Lorrain.

Lalonde Chocolatier-Confiseur

Craquelines, Duchesses de Lorraine, Chardons Lorrains, Bergamotes de Nancy IGP.

Maison des Sœurs Macarons

Macarons des Soeurs, Perles de Lorraine, Pain de Gênes bergamot cakes, fruit cakes, mirabelle plum cakes, Florentines, Bergamotes de Nancy IGP.

Pâtisserie Derelle

Le Seichanais cakes, Chocotee chocolate bites.

Pâtisserie Saint Epvre

Saint-Epvre cakes, L'Ambassadeur cakes, sugar vases, Bergamotes de Nancy IGP.

À la table du Bon Roi Stanislas

Baba au Tokaji with saffron ice cream, bergamot candies

Brasserie L'Excelsior

The Tout-Nancy.

La Bolée - Crêperie Bretonne

Vautes (small pancakes) with Lorraine mirabelle plums.

LORRAINE BEER ROUTE

While the origins of beer have been lost over time, the oldest known relics in Lorraine are votive steles dating back to the 3rd century, on display at the Cour d'Or Museum in Metz.

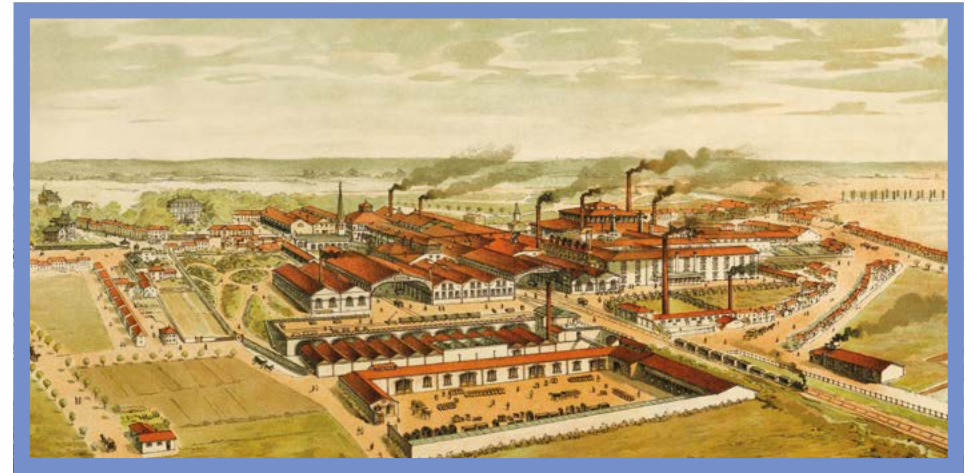


Lorraine's brewing history was marked by the arrival of English Benedictine monks in Dieulouard in 1608, who brewed beer that was renowned throughout the region. In 1873, Louis Pasteur came to Tantonville to conduct his work on yeast that led to the 1876 publication «Studies on Beer», considered the first scientific work

MUSEUMS, HERITAGE, CRAFT BREWERIES...

With 105 registered breweries and micro-breweries, 19 historic sites and 3 museums including the Musée Français de la Brasserie (French Brewery Museum) in Saint-Nicolas-de-Port (15 km from Nancy) the city and its immediate surroundings are a heaven for beer lovers. Significant events include the annual Salon

Old breweries
of Maxéville



on modern brewing. At the end of the 19th century, France's biggest breweries were in Lorraine. Among these, only the brewery of Champigneulle managed to resist the mergers and takeovers of the industry. With a production of more than 3.5 million hectolitres, it is still today one of France's largest industrial breweries.

At the end of the 1980s, microbreweries began cropping up in Great-Britain and the United States before arriving in France a few years later. In 1993, Lorraine's first microbrewery opened in Amnéville. Today, there are 70 microbreweries in the region and more than 1,600 in France.

des Brasseurs (brewers' fair) and Fête des Bières (beer festival), which take place in October at Nancy's Parc Expo (from October 17 to 20, 2024).

Find out more about beer and brewing-related museums, sites to visit, and breweries in Lorraine at www.routelorrainedelabiere.com

COTES DE TOUL WINES

Wine has been made in Lorraine since before the Roman conquest.

Charlemagne owned vineyards in the Toulois area. Later, the Dukes of Lorraine and the monasteries and abbeys provided a fresh impetus for wine production. In the 19th century, the Lorraine vineyards were more extensive than those of Alsace... until the phylloxera epidemic in the 1890s. The wines of the Côtes de Toul have been granted the AOC (Appellation d'Origine Contrôlée) designation since March 31, 1998. Its main wine is the Gris de Toul, whose name comes from its production method, which involves blending white grapes with red skins (specifically Pinot Noir and Gamay) after pressing them directly. It is precisely this direct pressing

without maceration that gives it its gray color and distinguishes it from rosé wine. Gris de Toul suits perfectly with typical Lorraine dishes such as quiche Lorraine, potée Lorraine, tourte, and pâté Lorrain. Other wines are produced in Lorraine: wines from Meuse (IGP Côtes de Meuse since 2009), wines from Moselle (AOC since 2010), and sparkling wines from Lorraine. By the end of 2023, the communication entity «Vins de Lorraine» was conceived to create synergy between the winemakers and wines of the region; existing AOC and IGP designations remain.

<https://vins-de-lorraine.fr/>



Vines at Lucey

QUICHE LORRAINE AND SALTY SPECIALITIES



Quiche lorraine

The region is home to must-eat dishes like quiche Lorraine, pâté Lorraine and plenty of meats and cheeses. When Lorraine's most well-known specialty, quiche Lorraine, is made according to the traditional recipe, it's a delight that melts in your mouth, with a perfect balance between the softness of the cream and the strength of the bacon. So you know: there's no cheese in a real quiche Lorraine.

↔ Culture ↔

MAIN EVENTS

Alongside daily events and artistic happenings in and around the city (exhibitions, premieres, concerts, shows), Nancy also boasts major yearly events.

These are the highlights of the tourism calendar to keep in mind when planning a stay in Greater Nancy.

Pour toute précision de date, se renseigner sur notre site internet www.nancy-tourisme.fr (avec versions en ENG, D, NL et J) ou auprès de l'Accueil des Publics au +33(0)3 83 35 80 10



Festival RUN.
©L'Autre Canal

FESTIVAL RUN : APRIL 6-14, 2024

Every spring, the Urban Meetings of Nancy (RUN) invite all forms of urban cultures to Nancy for a strong period combining professional encounters, festive moments, and sports activities!

<https://run.nancy.fr/accueil>

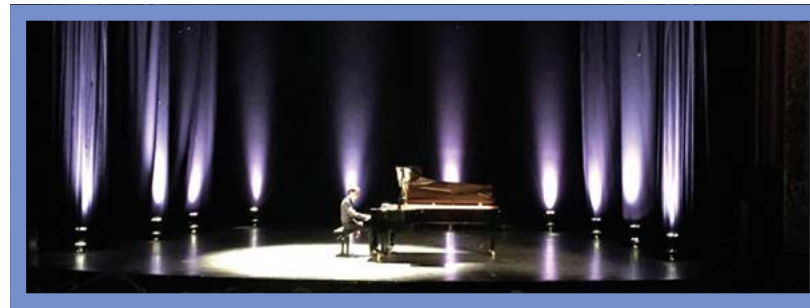


Mapping show
«La Belle Saison»

«LA BELLE SAISON» SUMMER PROJECTION-MAPPING SHOW: EVERY EVENING FROM MID-JUNE TO MID-SEPTEMBER 2024

Every summer, Place Stanislas plays host to a colourful projection-mapping show.

Presented by AV Extended under the artistic direction of Jérémy Bellot and Nicolas D'Ascezio, with technical and artistic teams mainly established in the Grand Est.



Nancyphonies

NANCYPHONIES: FROM 5 TO 20 JULY 2024

A not-to-be-missed classical music event in the Grand Est region, this summer festival puts on around thirty exceptional concerts, including plenty of free shows in the most beautiful venues of Nancy as well as in unexpected places.

The festival holds around 20 free outdoor concerts, most of them at Pépinière Park with the aptly named concert series «L'Heure Exquise» (Time of Delight).

More information at:

<http://www.nancyphonies.net>



Le Livre sur la Place

LE LIVRE SUR LA PLACE: SEPTEMBER 13-15, 2024

Le Livre sur la Place (Book on the Square) is the leading national book fair of France's autumn publishing season, welcoming 550 authors and 170,000 visitors on Place de la Carrière.

Three high-energy days honouring books in all their forms: Exhibitions, literary cafes, meetings, signing events, radio shows and more.

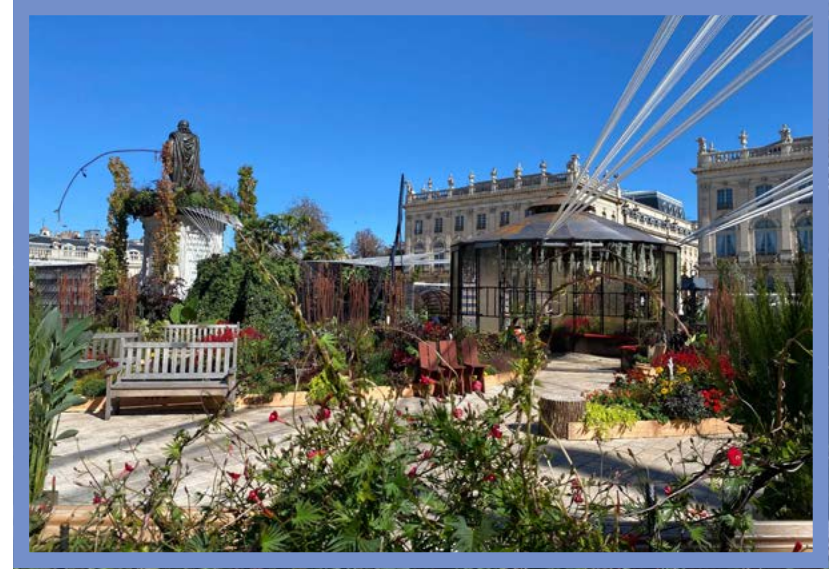
The event in Nancy is held under the sponsorship of the Académie Goncourt (whose famous founders are from the region and whose archives are transferred to the archives of the city).

Under the big tent set up on Place de la Carrière, 550 authors will be present, with more than 100 meetings, debates, readings, shows and awards presentations.

And there are a few surprises in store to celebrate this event in style. An event that renews and expands its programme every year, without ever losing the original soul of a fair that's accessible and open to everyone.

Free access to the festival tent and all the events of Le Livre sur la Place (subject to available capacity).

<https://lelivresurlaplace.nancy.fr>



Le jardin éphémère
©Lucie Petitjean

LE JARDIN ÉPHÉMÈRE FROM THE END OF SEPTEMBER TO THE BEGINNING OF NOVEMBER

An escape from reality on a transformed Place Stanislas, the ephemeral garden is eagerly awaited each year, held since 2005.

The city of Nancy creates a garden inspired by a current and relevant theme, unveiled at the beginning of the summer: travel, history, heritage, sister cities, etc. The town designs flower beds that adorn the square: a combination of flowers and poetry.

The temporary garden offers a new perspective on the square, a delight to wander and explore.

Benches give visitors a welcome break for a daydream in the heart of the city. A perfect spot to meet up, catch up or enjoy lunch in the sun!

At night, the garden creates an organic atmosphere of magical shadows, giving off aromas of soil and water with the sumptuous Place Stanislas as a backdrop.



NANCY JAZZ PULSATIONS: 5-19 OCTOBER 2024

Nancy Jazz Pulsations, or more commonly known as NJP, is a festival of jazz and current music that takes place during the first two weeks of October in Nancy and in different concert halls in Lorraine. Great music and a great atmosphere in the beginning of autumn.

This festival takes over the entire city of Nancy for ten days, promising exceptional evenings and events like Pépinière en Fête, Nancy Jazz Poursuite and Apéros Jazz. Not to mention Magic Kids for young audiences and other concerts throughout the region.

International headliners and plenty of new acts to discover!

The programme will be announced in June 2024!

<https://nancyjazzpulsations.com/>

Nancy Jazz Pulsations

SAINT NICHOLAS FESTIVITIES: 22 NOVEMBER 2024 TO 5 JANUARY 2025

PARADE WEEKEND ON 7 AND 8 DECEMBER 2024

Listed on the UNESCO national inventory since 2018, for 40 days of festivities boast music, events, a great weekend parade and the entire city filled with lights.

A traditional festival throughout Lorraine, it's here in Nancy that Saint Nicholas is celebrated with the most splendour and cheer. Officially on 6 December, the feast of Saint Nicholas is celebrated for 40 days from the end of November to the beginning of January, with Saint Nicholas Villages, rides, events and activities.



Les Fêtes de la Saint-Nicolas

And of course, there's the winter edition of «La légende de Saint-Nicolas», projecting the legend of the three children on the façades of the square every night!

There are several different Saint Nicholas Villages set up throughout the city. On Place Charles III, between the covered market and the beautiful Saint-Sébastien Church, the Saint Nicholas Village

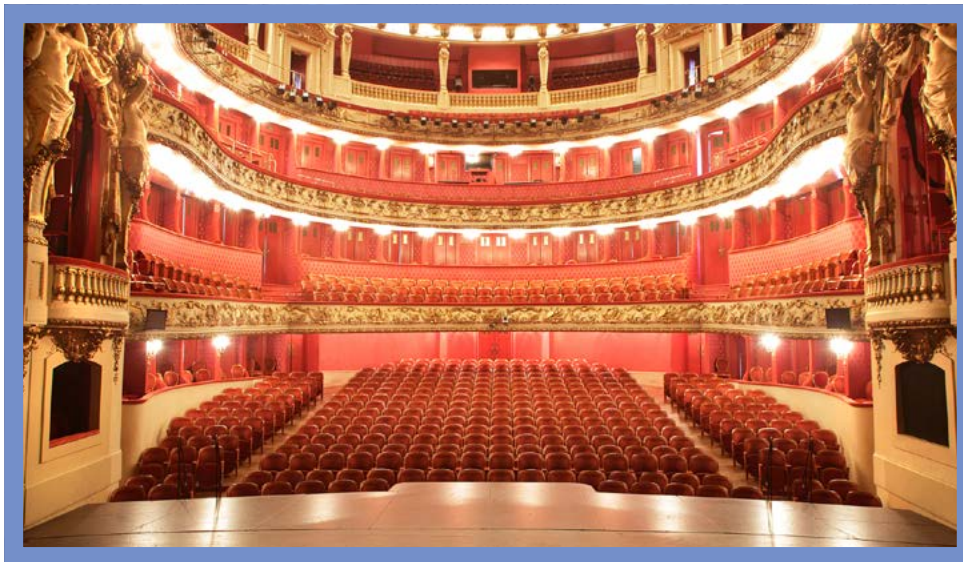


has more than sixty stands brimming with gift ideas, surprises and of course, delicious treats of the season: gingerbread, mulled wine and more. Everything's here to start checking off your Christmas list!

<https://saint-nicolas.nancy.fr>



Opéra national de Lorraine
Façade ©L'œil créatif



Opéra national de Lorraine
Grande Salle ©L'œil créatif

CULTURAL INSTITUTIONS

NATIONAL OPERA OF LORRAINE

With a classical exterior and an interior inspired by the Palais Garnier, Nancy's opera house was added to the list of historical heritage in 1923 and was completely renovated in 1994.

It is an Italian-style theatre, a pastiche of an 18th century opera house. On 1 January 2006, the French Ministry for Culture and Communication awarded it Opéra National status. "Opéra de Nancy et de Lorraine", as it was then called, joined Lyon, Bordeaux, Strasbourg and Montpellier opera houses to become the fifth Opéra National in the French provinces. This distinction is full recognition of the quality of the artistic work of Opéra National de Lorraine and the skills of its teams. The opera boasts excellent acoustics, especially for Mozart and Baroque pieces.

The performances are accompanied by Nancy's Lyric Symphony Orchestra and its 66 musicians. The group also puts on a season of symphonic concerts, the majority of which are held at Salle Poirel.

Website: www.opera-national-lorraine.fr

Address: Place Stanislas 54000 Nancy

THÉÂTRE DE LA MANUFACTURE

Its stage welcomes great moments of modern theatrical creation: the Théâtre de la Manufacture puts on a season of around 15 shows created by national, regional or international theatres and companies.

The theatre includes three performance halls with 369 seats, 140 seats (La Fabrique) and 60 seats (rehearsal room) as well as a team of 23 people.

It is a place of creation oriented toward contemporary texts (Emmanuel Darley, Serge Valletti, Jonas Hassen Khémiri, Pierre Desproges) and the classics (William Shakespeare, Molière, Bertolt Brecht, Montaigne).

The creations of the Théâtre de la Manufacture are performed in Nancy, as well as on regional, national and international tours. The Théâtre de la Manufacture regularly partners with other theatres or companies for coproductions.

The theatre is open to the public: visitors can request to visit the performance halls and the backstage areas. On show nights, the bookshop dedicated to theatrical writings is open, as is the theatre's bar for sharing a drink with the actors.

The theatre is also a training ground based on three principles: read, write, play. It is open to everyone, in particular to high school and university students studying theatre, as well as to professionals and other groups who have never been able to follow their calling.



Théâtre de la Manufacture

Website: www.theatre-manufacture.fr

Adress: 10 Rue Baron Louis, 54000 Nancy

BALLET OF LORRAINE

The Centre Chorégraphique National - Ballet de Lorraine was awarded CCN (national choreography centre) status in 1999. Since then, it has been dedicated to contemporary choreography.



Ballet of Lorraine

It has been designed to offer the widest range of possibilities in terms of research, experimentation and artistic creation. It aims to be a platform for the various dance disciplines and a venue within which today's many different visions of dance can coexist. This makes the CCN - Ballet de Lorraine and its 26 dancers one of Europe's leading creative and repertory contemporary choreography companies, presenting important works by major choreographers.

The facility consists of three studios (one of which has tiered seating for 100 people), together with offices, changing rooms, storage areas, a dining room and a sewing workshop.

The CCN stages a range of varied and original events under the name "LAB BLA BAL": talks, performances, workshops, installations, projections, open rehearsals and encounters.

Petter Jacobsson, a principal dancer from Sweden, is the artistic director of the Ballet of Lorraine since 2011. He won a Goldmask award in 2002 for best choreography for the musical comedy Chess with Björn Ulveus and Benny Andersson of the group ABBA.

Website: ballet-de-lorraine.eu

Adress: 3 Rue Henri Bazin, 54000 Nancy



L'Autre Canal

L'AUTRE CANAL (THE OTHER CANAL)

Built on a former industrial site in the Rives de Meurthe district, not far from the river of the same name, and officially opened in 2007, L'Autre Canal is a music venue that resonates throughout Nancy and beyond!

With a programme including rock, pop, rap and electro-pop concerts, L'Autre Canal is an exciting live music venue comprising two halls: a small concert room with a capacity of 350 for "intimate" performances and a large room that can hold an audience of up to 1,300 standing.

It's also an arts centre offering spaces for meetings, performances, exhibitions, film shows, artists' residences, rehearsal studios as well as support for projects led by amateur or emerging artists. Its slogan: eclecticism and openness!

Website: lautrecanalnancy.fr

Adress: 45 Boulevard d'Austrasie, 54000 Nancy

STREET ART

34 artistic works are presented in the streets of the city of Nancy - from the Old Town to Porte Sainte-Catherine, art is everywhere, giving rhythm to daily life in Nancy and amazing visitors.



«Giulia» fresco, 7 rue Léopold Lallement

With ADN – Art Dans Nancy, the city of Nancy encourages visitors to walk the streets of the city in an urban tour to discover the local, national or international artists who have left their mark on the city. Every year, the city launches new works in the public domain. In 2022, no less than nine new pieces were created. With frescoes, amazing installations and sculptures like the new KOGAONE fresco at 108 Boulevard Lobau or Robin Godde's solar seat in the Godron Garden, every year, street art is a favourite among all our visitors.

➡ To explore the local area ⬅

Pedestrian-tourist signage has been developed throughout the city. This allows tourists and walkers to make their way freely to the major points of tourist interest thanks to three routes : Historic Town Centre, Art Nouveau and the Rives de Meurthe district.

Bronze brass triangles on the ground bear a distinct symbol for each of the three routes. Destination signs and totems complete the system with QR codes to have information about the different points of interest on each route.

GUIDED AND AUDIO-GUIDED TOURS

GUIDED TOURS

The Metropolitan Tourism Office offers a range of guided tours on various themes: historic town centre, Art nouveau, municipalities of the metropolitan area and themed tours.

List of guided tours on the website: <https://visites.nancy-tourisme.fr/>

AUDIO-GUIDED TOURS

Audio-guided tours allow visitors to discover the metropolitan area independently, using an audio and multimedia device offering several tours all about the historic town centre, Art nouveau, Renaissance and the banks of the Meurthe, in French and 10 other languages. Photos and quizzes complete the presentation of each site.

For more information: <https://www.nancy-tourisme.fr/en/to-see-to-do/visits-tours-and-city-pass/guided-tours/>

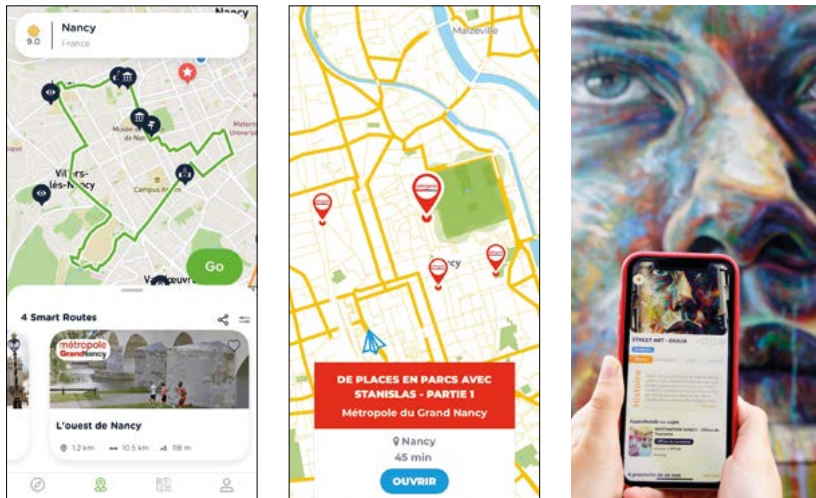


DISCOVER THE LOCAL AREA WITH A GREETER

A Greeter is a local volunteer who welcomes visitors for a personalised walk of up to two hours, encouraging discussion and exchanges.

Booking a walk with a Greeter offers the chance to meet with a volunteer hoping to show you their local area, the way they love and enjoy it. A Greeter is not a guide. They welcome tourists to discover the places they enjoy, tell their personal stories and share their way of life in the city.

<https://www.nancy-tourisme.fr/en/to-see-to-do/discover-nancy-with-an-inhabitant/>



Jooks, Baludik et Henoo
(de gauche à droite)

MOBILE APPS TO DISCOVER NANCY IN A DIFFERENT WAY

JOOKS

Jooks is an app focused on sport and culture, with which users can be guided by voice GPS directions on a run (or a walk) and enjoy anecdotes about the local heritage they encounter along the way.

Baludik is an app for families, offering treasure hunts, tours and walks all around the Greater Nancy metropolitan area.

HENOO

Henoo is a free mobile app dedicated to local tourism, focused on culture and heritage.

It is a collaborative app fuelled by the participation of users, who can add their own contributions, containing not only historical and tourist information for each point of interest, known as 'Noo's, but also anecdotes and legends provided by these contributors.

THE NANCY CITY PASS

The Nancy City Pass allows all visitors to enjoy free entry and great offers related to culture, leisure, transport and shopping.

The Nancy City Pass allows all visitors to enjoy free entry and great offers related to culture, leisure, transport and shopping.

It offers free, unguided access to all museums and public sites within the metropolitan area, a free guided tour and audio-guided tour of the city, free access to the entire Stan transport network, as well as offers and discounts in the many DESTINATION NANCY partner shops and restaurants, on activities and in the pools of the metropolitan area.

The pass is available in three formats of varying durations:

- The 24-hour pass
- The 48-hour pass
- The 72-hour pass

From €18

For more information: <https://www.nancy-tourisme.fr/en/to-see-to-do/visits-tours-and-city-pass/nancy-city-pass/>

NANCY CITY GUIDE & PLANS

- City maps can be downloaded and are available free of charge at the reception of the Tourist Office during opening hours: <https://www.nancy-tourisme.fr/en/prepare-your-stay/services-of-the-tourist-office/documentation/>
- NANCY CITY GUIDE available for download from our website: <https://www.nancy-tourisme.fr/en/prepare-your-stay/services-of-the-tourist-office/documentation/>